

# QUESTIONS & ANSWERS

Kill your exam at first Attempt



150-820 Dumps  
150-820 Braindumps  
150-820 Real Questions  
150-820 Practice Test  
150-820 dumps free



**Brocade**

# 150-820

*Brocade Certified Ethernet Fabric Professional 2015*

<https://killexams.com/pass4sure/exam-detail/150-820>



**QUESTION 170**

Exhibit:

sw0(conf-if-te-0/5)# channel-group 100 mode active type standard %%Error: A switchport or a router port cannot be aggregated Exhibit:

Referring to the exhibit, what is the cause of the error when applying a port channel to an interface?

- A. A routing protocol is configured in the port channel.
- B. Access mode is not supported with link aggregation.
- C. Switchport is configured in the port channel.
- D. Switchport is configured on the interface.

**Correct Answer: D**

**QUESTION 171**

Exhibit:

sw0# show cee maps

CEE Map 'default'

Precedence: 1

Remap Fabric-Priority to Priority 0

Remap Lossless-Priority to Priority 0

Priority Group Table

1: Weight 25, PFC Enabled, BW% 25

2: Weight 60, PFC Disabled, BW% 60

3: Weight 15, PFC Disabled, BW% 15

15.0: PFC Disabled

15.1: PFC Disabled

15.2: PFC Disabled

15.3: PFC Disabled

15.4: PFC Disabled

15.5: PFC Disabled

15.6: PFC Disabled  
15.7: PFC Disabled  
Priority Table  
CoS: 0 1 2 3 4 5 6 7

-----  
PGID: 2 3 2 1 2 2 2 15.0

Exhibit:

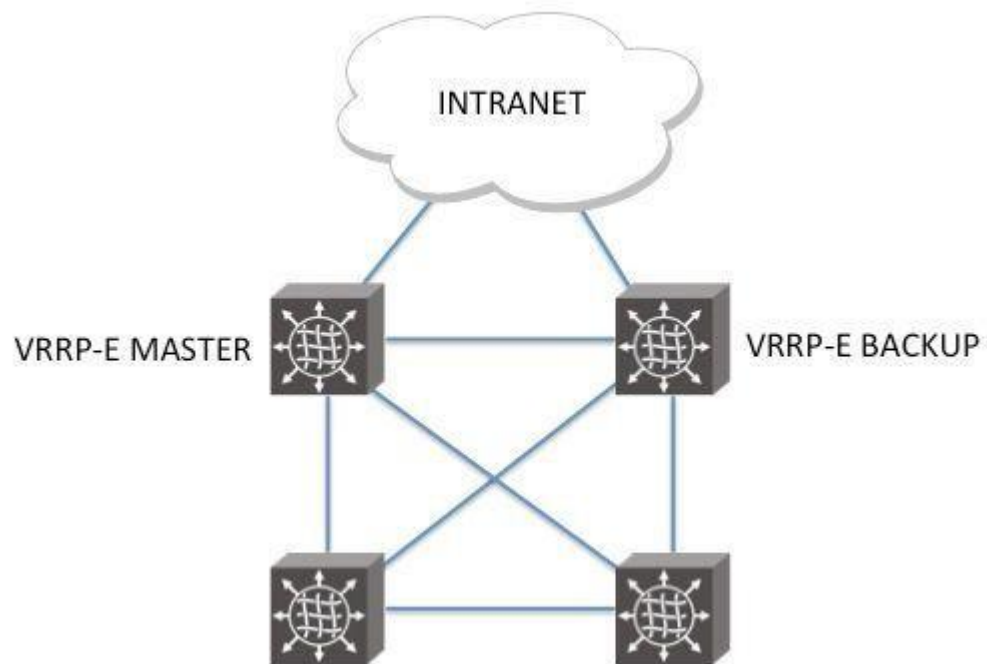
Referring to the exhibit, which two statements are true? (Choose two.)

- A. CoS 1 is lossless.
- B. CoS 3 is lossless.
- C. CoS 1 has a 15% bandwidth guarantee.
- D. CoS 3 has a 15% bandwidth guarantee.

**Correct Answer:** BC

#### **QUESTION 172**

Referring to the exhibit, you have configured VRRP-E in your Brocade VCS Fabric on two switches connected to your intranet. You want to prevent unnecessary traffic on the ISL links.



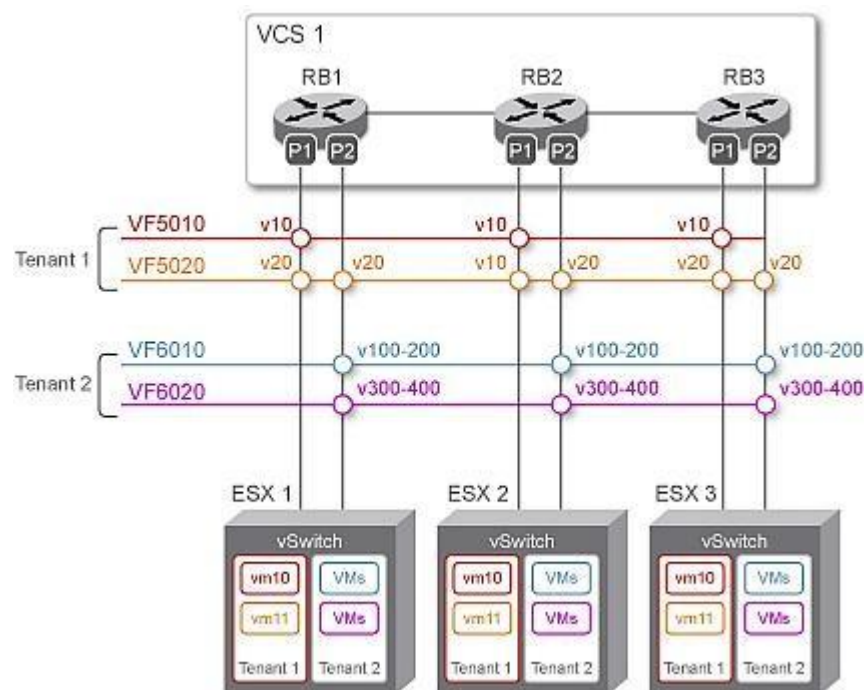
Which feature would you use to accomplish this task?

- A. track ports
- B. equal cost multi-path
- C. preempt mode
- D. short-path forwarding

**Correct Answer: D**

#### **QUESTION 173**

Referring to the exhibit, which statement is correct?

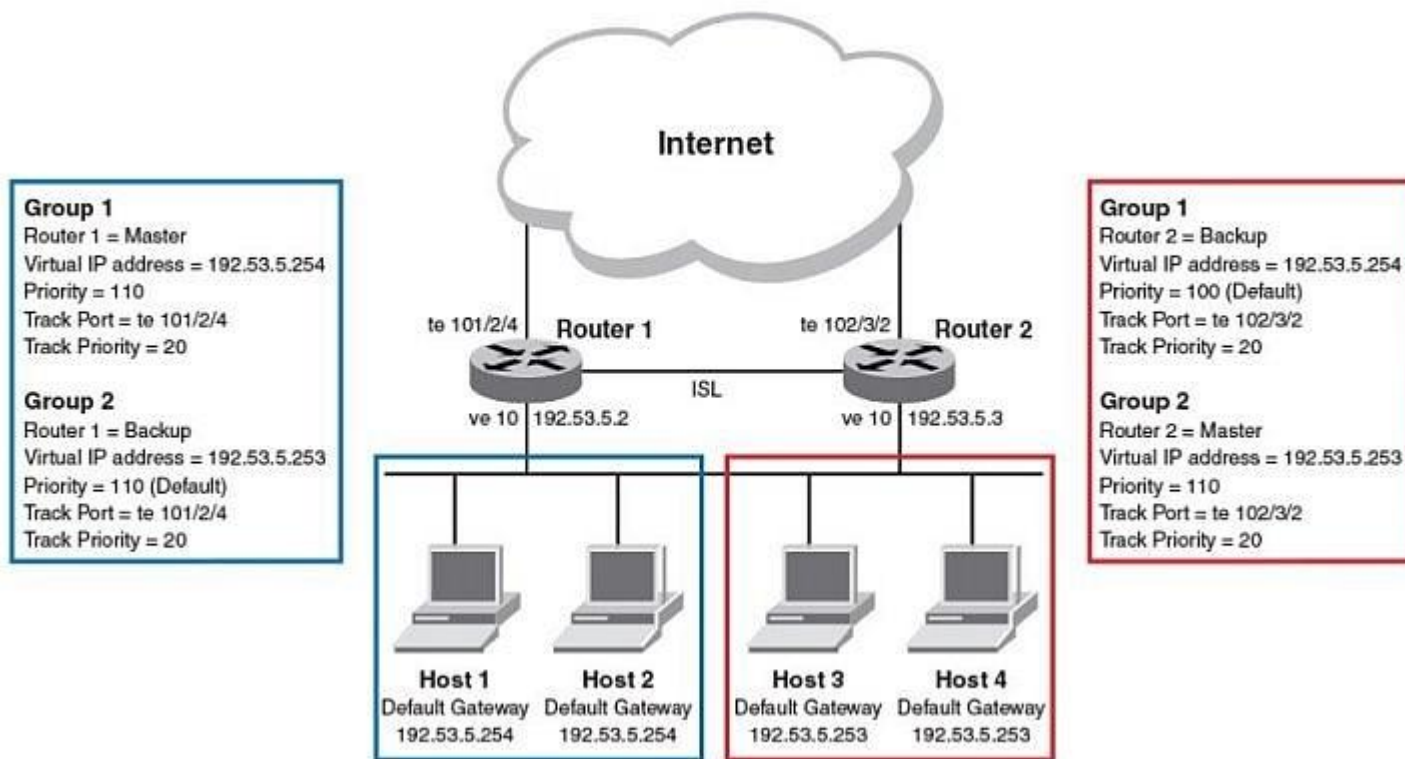


- A. VF5020 configuration is invalid because RBridge 2, Port 1 is configured for VLAN 10, while all other ports are configured for VLAN 20.
- B. The configuration for RBridge 2, Port 1 is invalid because multiple Virtual Fabrics are configured for an overlapping VLAN on the same physical port.
- C. The configuration on Port 2 on all R Bridges is invalid because service and transport VFs are mutually exclusive on the same physical port.
- D. The configuration on Port 1 on all R Bridges is invalid because multiple Virtual Fabrics are configured on the same physical port using different VLAN IDs.

**Correct Answer: B**

#### QUESTION 174

Router 2 has failed. You want to know what will happen when Host 3 tries to send traffic to the Internet.



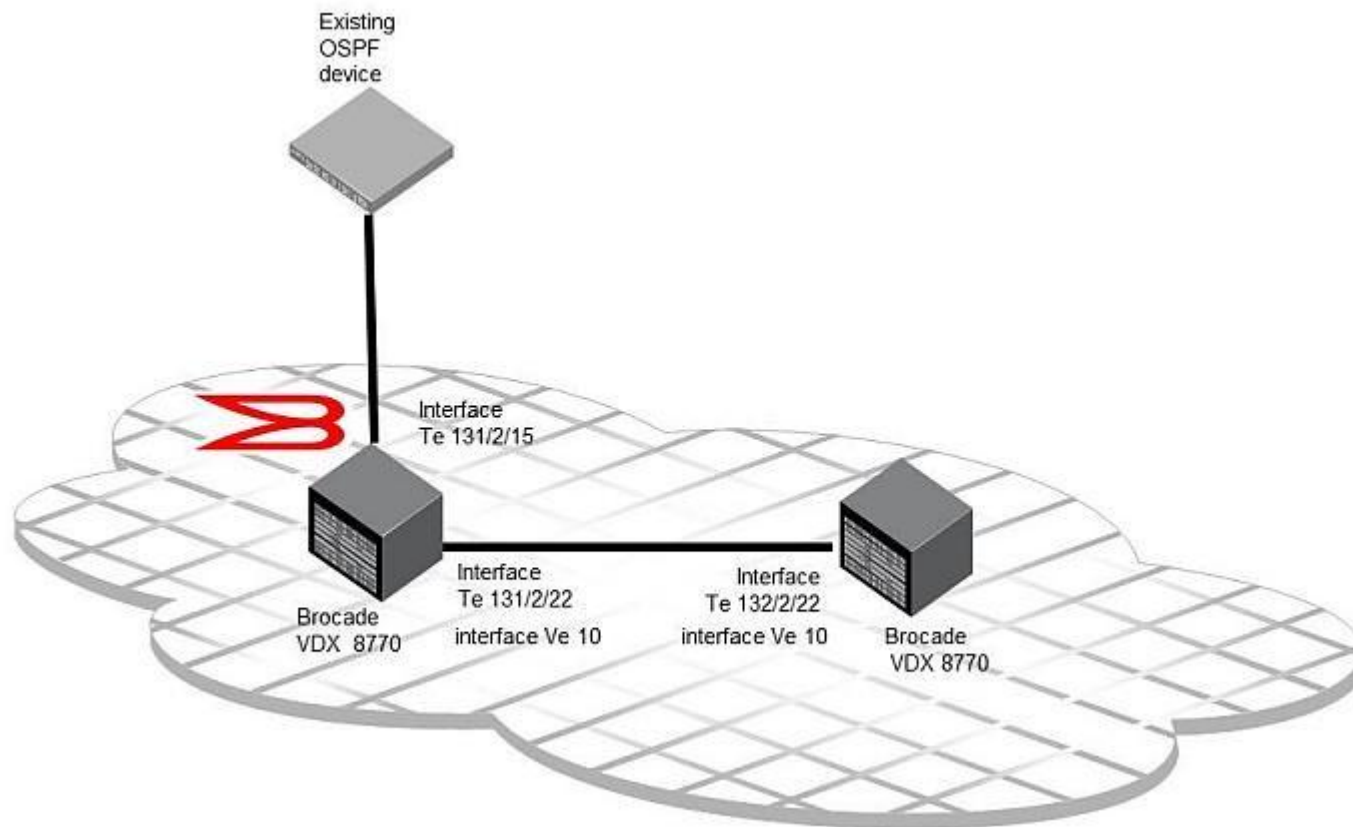
Referring to the exhibit, which statement is correct?

- A. Host 3 can send traffic to the Internet through Router 1.
- B. Host 3 cannot send traffic because the ISL link is down.
- C. Host 3 can send traffic but the priority set on Router 1 will drop some traffic.
- D. Host 3 cannot send traffic because Router 1 was not tracking the correct port.

**Correct Answer: A**

**QUESTION 175**

You are configuring OSPF in a Brocade VCS Fabric. The implementation will integrate with an existing OSPF network. The fabric is in logical chassis mode.



Referring to the exhibit, which three actions are correct? (Choose three.)

- A. Enable OSPF at the RBridge level.
- B. Enable OSPF globally in the fabric.
- C. Enable OSPF on interface Ve 10.
- D. Enable OSPF on interface 131/2/15.
- E. Enable OSPF on interface 131/2/22.

**Correct Answer:** ACD

**QUESTION 176**

You have formed a Brocade VCS fabric with four switches.



Referring to the exhibit, which Brocade VDX would be the principal RBridge?

- A. RB1
- B. RB2
- C. RB3
- D. RB4

**Correct Answer:** D



### QUESTION 177

You added a new Brocade VDX 6740 to an existing Brocade VCS Fabric in your data center. You connected the VDX 6740 to ports 3/0/11 and 3/0/12 on the existing fabric. After the switch boots, you realize it does not join the fabric. You examine the ISL status on the fabric as shown in the exhibit.

```
sw0(conf-if-te-3/0/19)# do sh fabric islport
```

```
Name: sw0
```

```
Type: 95.2
```

```
State: Online
```

```
Role: Fabric Principal
```

```
VCS Id: 1
```

```
Config Mode:Distributed
```

```
Rbridge-id: 3
```

```
WWN: 10:00:00:05:33:46:71:61
```

```
FCF MAC: 00:05:33:46:71:61
```

```
Index Interface State Operational State
```

```
===== 0 Te 3/0/1 Down
```

```
1 Te 3/0/2 Down
```

```
2 Te 3/0/3 Down
```

```
3 Te 3/0/4 Down
```

```
4 Te 3/0/5 Down
```

```
5 Te 3/0/6 Down
```

```
6 Te 3/0/7 Down
```

```
7 Te 3/0/8 Up ISL 10:00:00:05:33:5c:e1:5a "sw0" (downstream)(Trunk Primary) 8 Te 3/0/9 Up ISL (Trunk port, Primary is 3/0/8 )
```

```
9 Te 3/0/10 Down
```

```
10 Te 3/0/11 Up ISL (Trunk port, Primary is 3/0/12 ) 11 Te 3/0/12 Up ISL segmented,(ESC mismatch, Config Mode)(Trunk Primary) 12 Te 3/0/13 Down
```

```
13 Te 3/0/14 Down
```

```
14 Te 3/0/15 Down
```

```
15 Te 3/0/16 Down
```

```
16 Te 3/0/17 Down
```

```
17 Te 3/0/18 Down
```

```
18 Te 3/0/19 Down
```

```
19 Te 3/0/20 Down
```

```
20 Te 3/0/21 Down
```

```
21 Te 3/0/22 Down
```

```
22 Te 3/0/23 Down
```

```
23 Te 3/0/24 Down
```

What is causing the problem?

- A. The new switch VCSID is incorrect.
- B. The new switch has an overlapping RBridge ID.
- C. The new switch does not have a VCS Fabric license.
- D. The new switch is not configured for logical chassis.

**Correct Answer: D**

#### **QUESTION 178**

Exhibit:

switch# show ip route

<Output Truncated>

Destination	Gateway	Port	Cost	Type	Uptime
1 0.0.0.0/0	10.24.64.1	mgmt	1	1/1	S 8m24s
2 1.1.1.0/24	10.1.1.10	Ve	10	1/1	S+ 3m11s
3 1.1.2.0/24	DIRECT	Ve	12	0/0	D 3m11s
4 10.24.64.0/20	DIRECT	mgmt	1	0/0	D 8m28s

Exhibit:

Referring to the exhibit, which statement is true?

- A. The route to 1.1.1.0/24 is a backup, and only active if the default route goes down.
- B. The 1.1.1.0/24 subnet is in a different VRF.
- C. The default route was dynamically learned.
- D. The 1.1.2.0/24 route was dynamically learned.

**Correct Answer: B**

#### **QUESTION 179**

You have formed a Brocade VCS Fabric. The fabric has four RBridges.

```
sw11# show vcs
Config Mode : Local-Only
VCS ID : 101
Total Number of Nodes : 4
Rbridge-Id WWN Management IP Status HostName
----- 11 10:00:00:05:33:55:64:B3* 10.255.245.7 Online "VDX11" 12 >10:00:00:05:33:55:5F:73
10.255.245.8 Online "VDX12" 13 10:00:00:05:33:91:4A:0B 10.255.245.29 Online "VDX13" 21 10:00:00:05:33:55:5D:F3 10.255.245.12 Online "VDX21"
```

Referring to the exhibit, which RBridge ID shown in the output is the principal RBridge?

- A. RBridge 11
- B. RBridge 12
- C. RBridge 13
- D. RBridge 21

**Correct Answer: B**

#### QUESTION 180

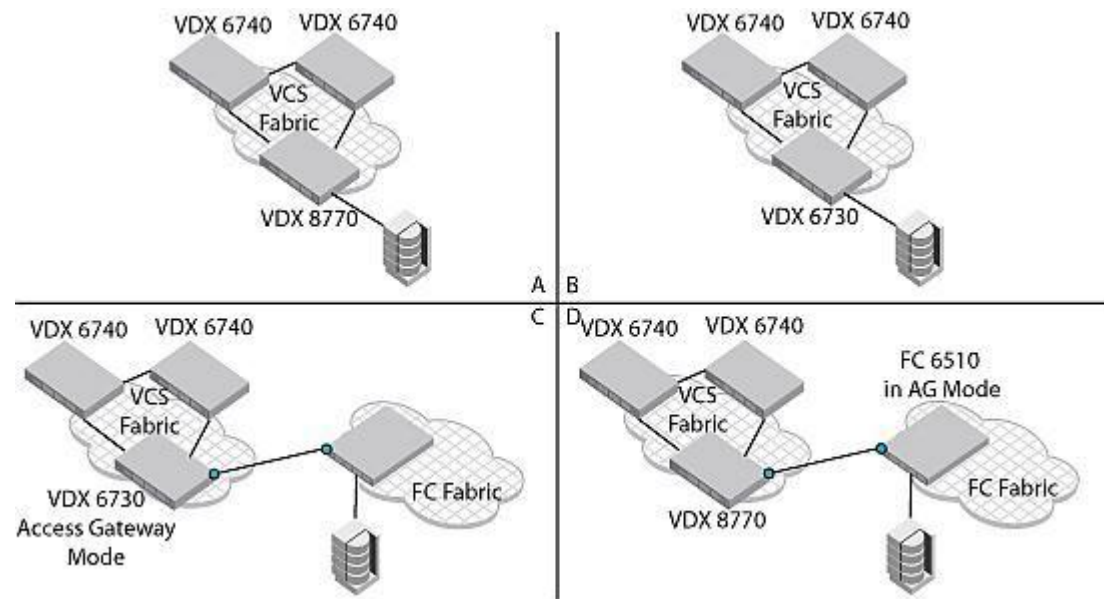
You are designing a single Brocade VCS Fabric for your data center network. Your MLX core routers are stand-alone. You want to use vLAG connectivity for devices. All link groups need to form single vLAGs. Referring to the exhibit, which link group will accomplish this?

- A. link group A
- B. link group B
- C. link group C
- D. link group D

**Correct Answer: D**

### QUESTION 181

A company has a Fibre Channel (FC) array in which they would like to connect to their data center servers using their existing Brocade VCS Fabric running NOS v4.1.0.



Referring to the exhibit, which two scenarios would accomplish this goal? (Choose two.)

- A. A
- B. B
- C. C
- D. D

**Correct Answer: BC**

### QUESTION 182

Exhibit:

RB10# show mac-address-table port-profile

VlanId Mac-address Type State AMPP Ports

100 0050.65bf.0001 Dynamic Active Profiled (T) 2/0/1 100 0050.65bf.0002 Dynamic Active Profiled (UC) 2/0/1

Exhibit:

Referring to the exhibit, what would you determine about this interface?

- A. Multiple VLANs are present on the interface.
- B. A single MAC address is learned on the interface.
- C. There is a conflict on the interface.
- D. The interface is unshielded copper.

**Correct Answer: C**

For More exams visit <https://killexams.com/vendors-exam-list>



*Kill your exam at First Attempt....Guaranteed!*