



*Up-to-date Questions and Answers from authentic resources to improve knowledge and pass the exam at very first attempt. ----- Guaranteed.*



300-510 Dumps  
300-510 Braindumps  
300-510 Real Questions  
300-510 Practice Test  
300-510 Actual Questions



**Cisco**

# 300-510

*Implementing Cisco Service Provider Advanced Routing Solutions (SPRI)*



<https://killexams.com/pass4sure/exam-detail/300-510>

### Question: 86

Refer to the exhibit.

```
RP/0/0/CPU0:iosxr# show run segment-routing  
  
segment-routing  
  global-block 18000 24999  
!  
  
RP/0/0/CPU0:iosxr#
```

A network engineer implemented this segment routing configuration.

Which statement about the output is true?

- A . This range conflicts with the segment routing local block range.
- B . The device must be reloaded for these ranges to be allocated and used.
- C . The default segment routing global block range is being used on this device.
- D . A nondefault segment routing global block range is being used on this device.

**Answer: D**

Explanation:

Reference: <https://www.cisco.com/c/en/us/td/docs/routers/asr920/configuration/guide/segment-routing/segment-routing-book/seg-routing-global-block.html>

### Question: 87

Which statement about enabling segment routing for IGP is true?

- A . Segment routing must first be enabled under then routing process and then globally
- B . Segment routing must first be enabled globally and then under the routing process
- C . Segment routing can be enabled only under the routing process
- D . Segment routing can be enabled only globally

**Answer: B**

Explanation:

Reference: [https://www.cisco.com/c/en/us/td/docs/ios-xml/ios/seg\\_routing/configuration/xe-16-6/segrt-xe16-6-book/sr-ospfv2-node-sid.html](https://www.cisco.com/c/en/us/td/docs/ios-xml/ios/seg_routing/configuration/xe-16-6/segrt-xe16-6-book/sr-ospfv2-node-sid.html)

**Question: 88**

- Which two conditions must be met before separate ISPs can provide interdomain multicast routing? (Choose two.)
- A . Each ISP must configure MSDP to connect its individual multicast administrative domain to the domains at other ISPs.
  - B . Each ISP must dedicate a single router to handle multicast traffic between providers.
  - C . Each ISP must replace its RP assignment with a global R
  - E . Each ISP must configure its network to use PIM-D
  - G . Each ISP must support intradomain multicast routing.

**Answer: AE**

**Question: 89**

Refer to the exhibit.

```
OSPF Router with ID (192.168.1.1) (Process ID 1)
Router Link States (Area 1234)
LS age: 691
Options: (No TOS-capability, DC)
LS Type: Router Links
Link State ID: 192.168.1.1
```

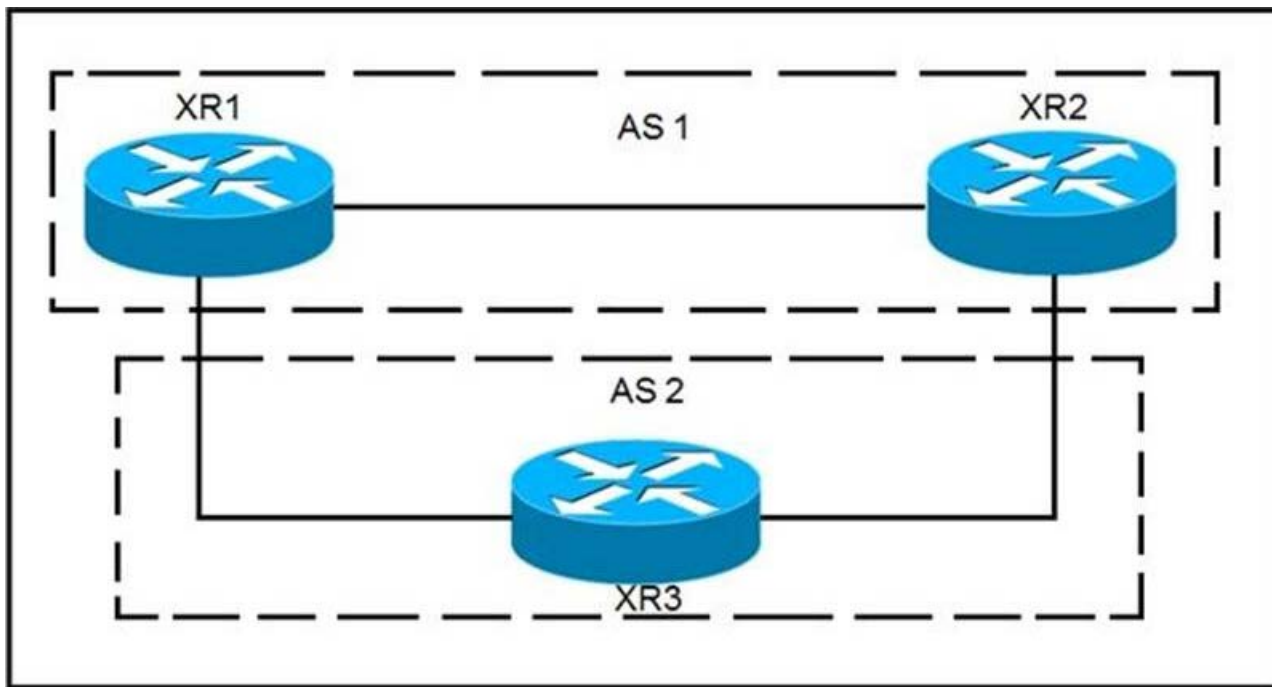
Which LSA type is indicated by this router output?

- A . type 3 LSA
- B . type 4 LSA
- C . type 1 LSA
- D . type 2 LSA

**Answer: C**

**Question: 90**

Refer to the exhibit.



XR1 and XR2 are sending the prefix 10.11.11.0/24 to XR3. A configured policy on

XR1 is incorrectly prepending AS path 11 11 12 12 onto this prefix. A network operator wants to add a policy onto XR3 that will not allow the falsely prepending prefix from being installed.

Which policy configuration applied to the XR3 neighbor configuration for XR1 can accomplish this requirement without impact to other or future received routes?

A)

```
route-policy NO_PREPEND
if as-path passes-through '11' then
  pass
else
  drop
endif
end-policy
```

B)

```
route-policy NO_PREPEND
if as-path prepends
  drop
else
  pass
endif
end-policy
```

C)

```
route-policy NO_PREPEND
if as-path passes-through '1' then
  pass
else
  drop
endif
end-policy
```

D)

```
route-policy NO_PREPEND
if as-path passes-through '11' then
  drop
else
  pass
endif
end-policy
```

- A . Option A
- B . Option B
- C . Option C
- D . Option D

**Answer:** D

Explanation:

Reference: [https://www.cisco.com/c/en/us/td/docs/routers/crs/software/crs\\_r4-1/routing/command/reference/b\\_routing\\_cr41crs/b\\_routing\\_cr41crs\\_chapter\\_01000.html#wp3850885229](https://www.cisco.com/c/en/us/td/docs/routers/crs/software/crs_r4-1/routing/command/reference/b_routing_cr41crs/b_routing_cr41crs_chapter_01000.html#wp3850885229)

**Question:** 91

Refer to the exhibit.

```
RP/0/0/CPU0:XR1#show run

route-policy AGGRO
  if destination in (10.0.0.0/8 ge 8 le 25) then
    set community (10:825)
  endif
  if destination in (10.2.0.0/24) then
    drop
  endif
  if destination in (10.1.0.0/24) then
    suppress-route
  endif
end-policy
!
!
router bgp 1
  bgp router-id 192.168.0.7
  address-family ipv4 unicast
    aggregate-address 10.0.0.0/8 route-policy AGGRO

RP/0/0/CPU0:XR1#
```

A network operator is working to filter routes from being advertised that are covered under an aggregate announcement. The receiving router of the aggregate announcement block is still getting some of the more specific routes plus the aggregate.

Which configuration change ensures that only the aggregate is announced now and in the future if other networks are to be added?

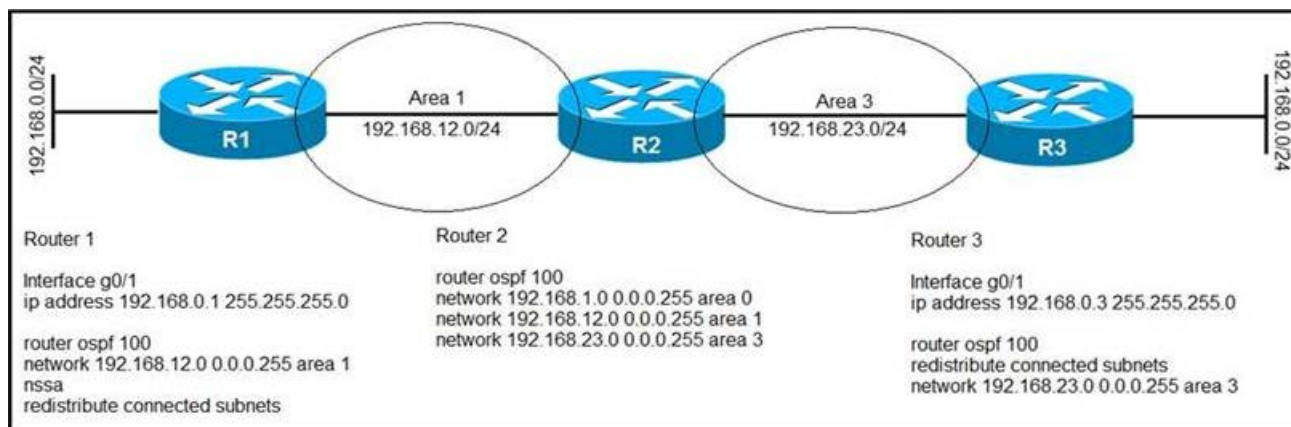
- A . Configure the summary-only keyword on the aggregate command
- B . Set each specific route in the AGGRO policy to drop instead of suppress-route
- C . Filter the routes on the receiving router
- D . Set each specific route in the AGGRO policy to remove instead of suppress-route

**Answer:** A

**Question:** 92

Refer to the exhibit.





After troubleshooting an OSPF adjacency issue, routers 1, 2, and 3 have formed OSPF neighbor relationships.

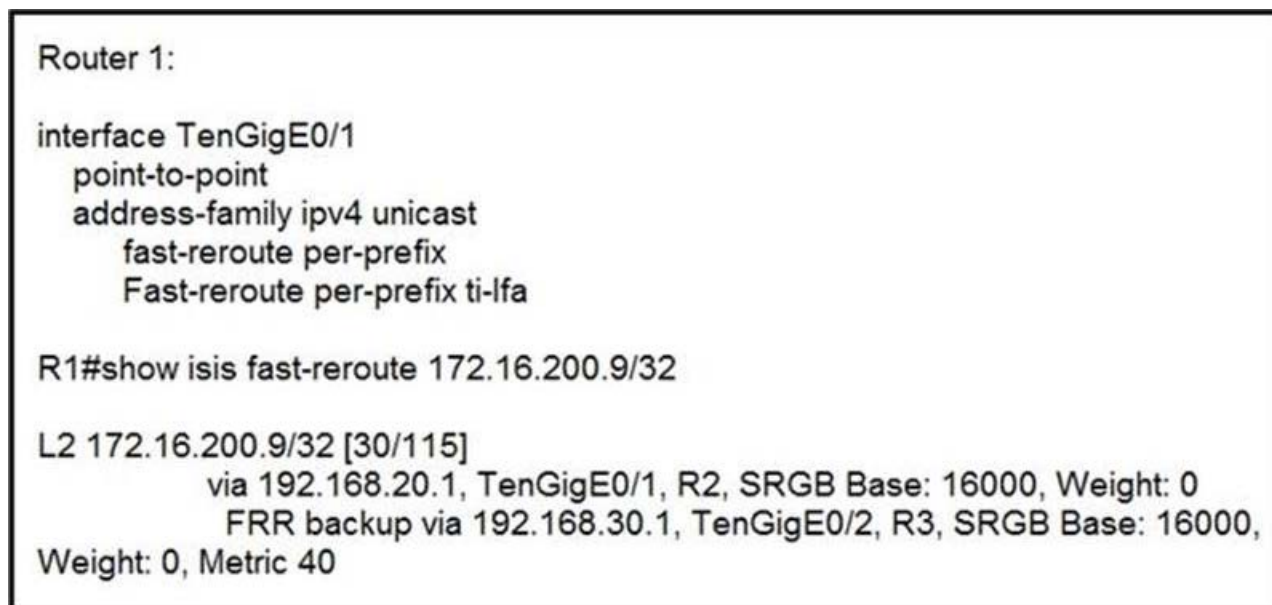
Which statement about the configuration is true?

- A . Router 2 receives a Type 5 LSAs from router 1 for its connected subnets
- B . Router 2 uses router 3 as the next hop for 192.168.0.0/24
- C . Router 2 uses router 1 as the next hop for 192.168.0.0/24
- D . Router 2 receives a Type 7 LSAs from router 3 for its connected subnets

**Answer:** A

**Question:** 93

Refer to the exhibit.



Router 1 is connected to router 2 on interface TenGigE0/1.

Which interface provides the alternate path to 172.16.200.9/32 when the link between router 1 and router 2 goes down?

- A . TenGigE0/1 interface provides the alternate path
- B . A backup path must be statically installed
- C . TenGigE0/2 interface provides the alternate path

D . A primary path must be manually installed

**Answer:** C

**Question:** 94

Refer to the exhibit.

```
router bgp 65520
 timers bgp 30 240
```

Which effect of this configuration is true?

- A . It sets the keepalive timer to 30 seconds and the hold timer to 240 seconds.
- B . It sets the keepalive timer to 30 milliseconds and the hold timer to 240 milliseconds
- C . It sets the hold timer to 30 milliseconds and the keepalive timer to 240 milliseconds
- D . It sets the hold timer to 30 seconds and the keepalive timer to 240 seconds

**Answer:** A

Explanation:

Reference: [https://www.cisco.com/c/en/us/td/docs/ios-xml/ios/iproute\\_bgp/command/irg-cr-book/bgp-s1.html#wp1552800140](https://www.cisco.com/c/en/us/td/docs/ios-xml/ios/iproute_bgp/command/irg-cr-book/bgp-s1.html#wp1552800140)

**Question:** 95

What can be used to determine a path from the head-end to a tail-end router when implementing SR-TE with a head-end, with little information on the network topology?

- A . traffic controller
- B . path computation engine
- C . tail-end router
- D . SNMP server

**Answer:** B





# SAMPLE QUESTIONS

*These questions are for demo purpose only. **Full version** is up to date and contains actual questions and answers.*

*Killexams.com is an online platform that offers a wide range of services related to certification exam preparation. The platform provides actual questions, exam dumps, and practice tests to help individuals prepare for various certification exams with confidence. Here are some key features and services offered by Killexams.com:*

**Actual Exam Questions:** *Killexams.com provides actual exam questions that are experienced in test centers. These questions are updated regularly to ensure they are up-to-date and relevant to the latest exam syllabus. By studying these actual questions, candidates can familiarize themselves with the content and format of the real exam.*

**Exam Dumps:** *Killexams.com offers exam dumps in PDF format. These dumps contain a comprehensive collection of questions and answers that cover the exam topics. By using these dumps, candidates can enhance their knowledge and improve their chances of success in the certification exam.*

**Practice Tests:** *Killexams.com provides practice tests through their desktop VCE exam simulator and online test engine. These practice tests simulate the real exam environment and help candidates assess their readiness for the actual exam. The practice tests cover a wide range of questions and enable candidates to identify their strengths and weaknesses.*

**Guaranteed Success:** *Killexams.com offers a success guarantee with their exam dumps. They claim that by using their materials, candidates will pass their exams on the first attempt or they will refund the purchase price. This guarantee provides assurance and confidence to individuals preparing for certification exams.*

**Updated Content:** *Killexams.com regularly updates its question bank and exam dumps to ensure that they are current and reflect the latest changes in the exam syllabus. This helps candidates stay up-to-date with the exam content and increases their chances of success.*

**Technical Support:** *Killexams.com provides free 24x7 technical support to assist candidates with any queries or issues they may encounter while using their services. Their certified experts are available to provide guidance and help candidates throughout their exam preparation journey.*

For More exams visit <https://killexams.com/vendors-exam-list>  
Kill your exam at First Attempt....Guaranteed!