



Up-to-date Questions and Answers from authentic resources to improve knowledge and pass the exam at very first attempt. ----- Guaranteed.



ASDEV01 Dumps
ASDEV01 Braindumps
ASDEV01 Real Questions
ASDEV01 Practice Test
ASDEV01 Actual Questions



Blue-Prism

ASDEV01

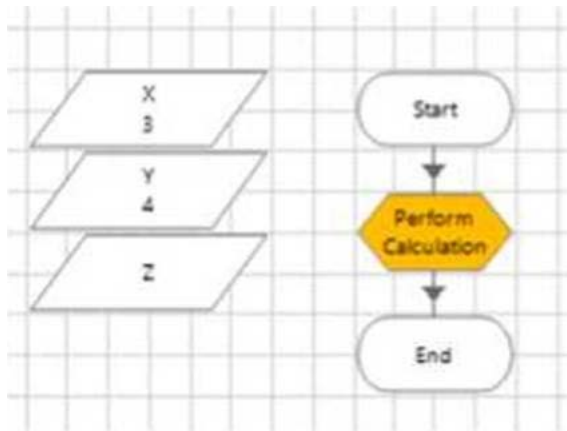
Blue Prism Associate Developer



<https://killexams.com/pass4sure/exam-detail/ASDEV01>

Question: 65

Examine the following Blue Prism Process diagram:



The initial values of the data items are displayed in the diagram above All 3 data items are configured as Number

The 'Perform Calculation' stage Properties window is displayed below:

The 'Calculation Properties' window is shown. It has a 'Name' field containing 'Perform Calculation' and a 'Description' field which is empty. Below these is an 'Expression' field containing the formula $[X] * [Y]$. At the bottom, there are three buttons: 'Validate', 'Evaluate Expression', and 'Store Result In'. The 'Store Result In' button is selected, and the result is stored in data item 'Z'.

When this diagram is run through the the End stage, what will the current value of the Z data item be?

- A. -1
- B. $[X] * [Y]$
- C. An Internal Exception will be thrown as the Expression contains multiple blank spaces
- D. 0

E. 12

Answer: E

Explanation:

The calculation stage will assign the value of [X][Y] to the Z data item, which is $34 = 12$. The blank spaces in the expression do not affect the calculation¹.

Reference: 1 <https://bpdocs.blueprism.com/bp-6-9/en-us/frmStagePropertiesCalculation.htm>

Question: 66

Which of the following items can be used in Blue Prism to transmit values between Process Pages? (Select all items which apply)

- A. Input Parameters
- B. Lookup Stages
- C. Output Parameters
- D. Calculation Stages
- E. Data Items

Answer: A,C,E

Explanation:

Input parameters, output parameters and data items can be used to transmit values between process pages by passing or returning values from one page to another². Lookup stages and calculation stages are not used for this purpose, as they are used to retrieve values from collections or perform calculations on values³.

Reference:

2 <https://bpdocs.blueprism.com/bp-6-10/en-us/helpProcessPages.htm>

3 <https://bpdocs.blueprism.com/bp-6-10/en-us/helpCalculationsAndDecisions.htm>

Question: 67

Examine the following Process flow:



The data item 'City V is configured as a Text data item and has an initial value of 'Liverpool'.

The data item 'City 2' is configured as a Text data item and has an initial value of 'Manchester'.

The data item 'City 3*' is configured as a Text data item and has an initial value of 'London'.

The data item 'List of Cities' is configured as a Text data item and has no initial value.

The 'Calc 1' stage is configured as follows:

Name:Calc1

Description:

Expression

[City 1] & ";" & [City 2]

Validate

Evaluate Expression

Store Result In

List of Cities

The 'Calc 2' stage is configured as follows:

Calculation Properties

Name:Calc2

Description:

Expression

[City 2] & ";" & [City 3]

Validate

Evaluate Expression

Store Result In

List of Cities

What will the value of the list of Cities' data item be after the Process flow has run?

- A. Manchester. London
- B. An Exception will be thrown as a data item with a Text data type cannot store a list of text values
- C. Liverpool Manchester.London

Answer: C

Explanation:

The calculation stage will append the values of City 1, City 2 and City 3 to the List of Cities data item, separated by spaces. The text data type can store words or phrases as well as numerical identifiers, and it has no character limit if the data is input by another method than manual1.

Reference: 1 <https://bpdocs.blueprism.com/bp-7-0/en-us/helpDatatypes.htm>

Question: 68

What is a Blue Prism Expression?

- A. The output from a Calculation stage
- B. The output from a Decision stage
- C. It is information provided in a Note stage
- D. A formula used to produce a value

Answer: D

Explanation:

A Blue Prism expression is a formula that can be entered into any stage to produce a value or perform an action. It can use data items, operators, functions and constants to create complex expressions that can manipulate data or control the flow of the process1.

Reference: 1 <https://bpdocs.blueprism.com/bp-6-10/en-us/helpCalculationsAndDecisions.htm>

Question: 69

A Blue Prism Process reads data about a customer from an online form which includes their date of birth A Process must determine if the customer is under the age of 18 before processing the customer request.

What type of Blue Prism stage would you use to test the customers age?

- A. Calculation stage
- B. Business Rule stage
- C. Validation stage
- D. Decision stage

Answer: D

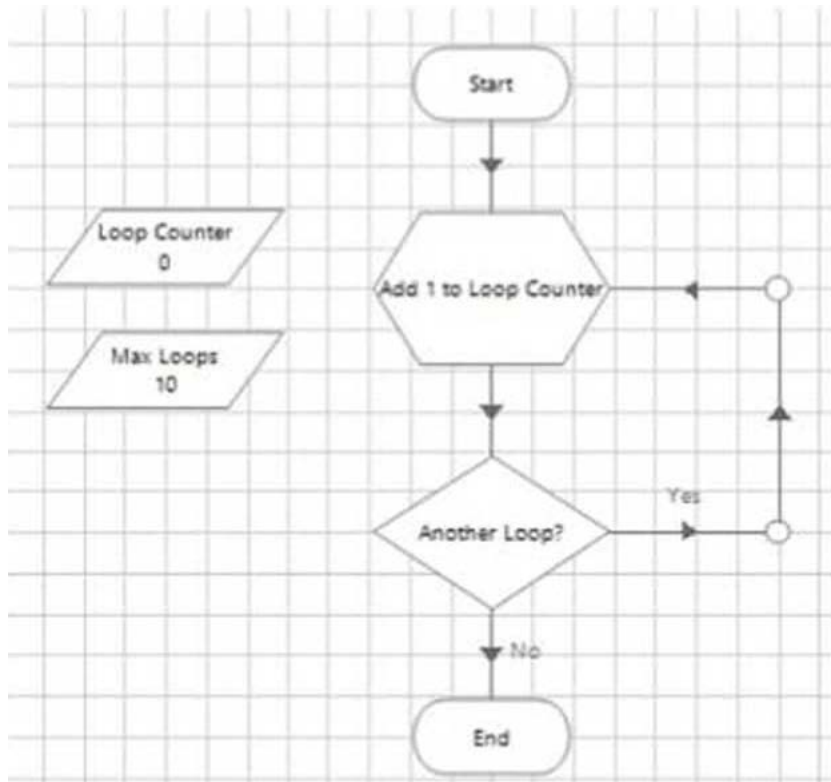
Explanation:

A decision stage is used to evaluate process rules or logic and branch the process flow based on the outcome of the evaluation. A decision stage can have multiple outcomes and can use expressions to compare values or check conditions¹. In this case, a decision stage can be used to compare the customer's date of birth with the current date and determine if they are under 18 or not.

Reference: 1 <https://bpdocs.blueprism.com/bp-6-10/en-us/helpCalculationsAndDecisions.htm>

Question: 70

Examine the following diagram from a Blue Prism Process:



This is an example of a common looping diagram which you will see within Blue Prism Processes

What is the name given for this type of flow diagram?

- A. Blue Prism Loop stage
- B. Circular Path
- C. Infinite Loop
- D. Layers of Logic

Answer: B

Explanation:

A circular path is a type of flow diagram that uses links to create a loop in the process flow, which can be repeated until a certain condition is met or an exception is thrown². A circular path typically consists of a decision stage, a loop

end stage and a loop start stage3.

Reference:

2 <https://bpdocs.blueprism.com/bp-6-10/en-us/helpProcessFlow.htm>

3 <https://bpdocs.blueprism.com/bp-6-10/en-us/helpLooping.htm>

Question: 71

Which area of Blue Prism would you use to develop a Blue Prism Process?

- A. Application Navigator
- B. Process Studio
- C. Application Modeller
- D. Development Studio
- E. Object Studio

Answer: B

Explanation:

Process Studio is the area of Blue Prism where processes are created and edited using stages and links to form graphical representations of working computer programs that automate manual repetitive tasks. Process Studio provides various tools and features to design, test and debug processes.

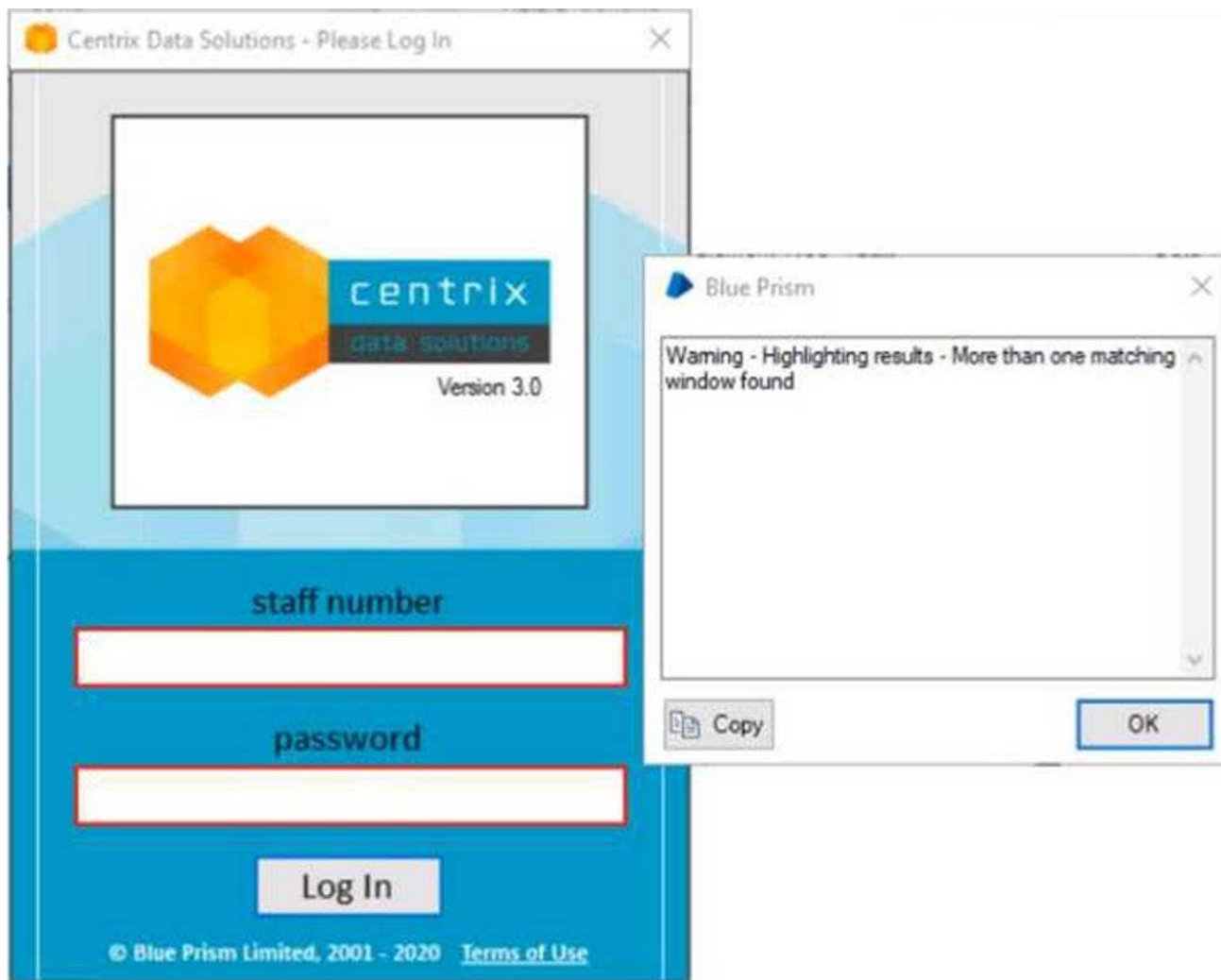
Reference:

<https://bpdocs.blueprism.com/bp-6-10/en-us/helpProcessStudio.htm>

<https://www.koenig-solutions.com/blue-prism-associate-developer-course>

Question: 72

The password field in the Centrix Data Solutions business application can be spied successfully, however when using the Highlight feature in Application Modeller the following behaviour is encountered



Which of the following Attributes would you use to help obtain a unique element match?

- A. Child Count
- B. Parent Class Name
- C. Parent Ordinal
- D. Ordinal
- E. Class Name

Answer: C

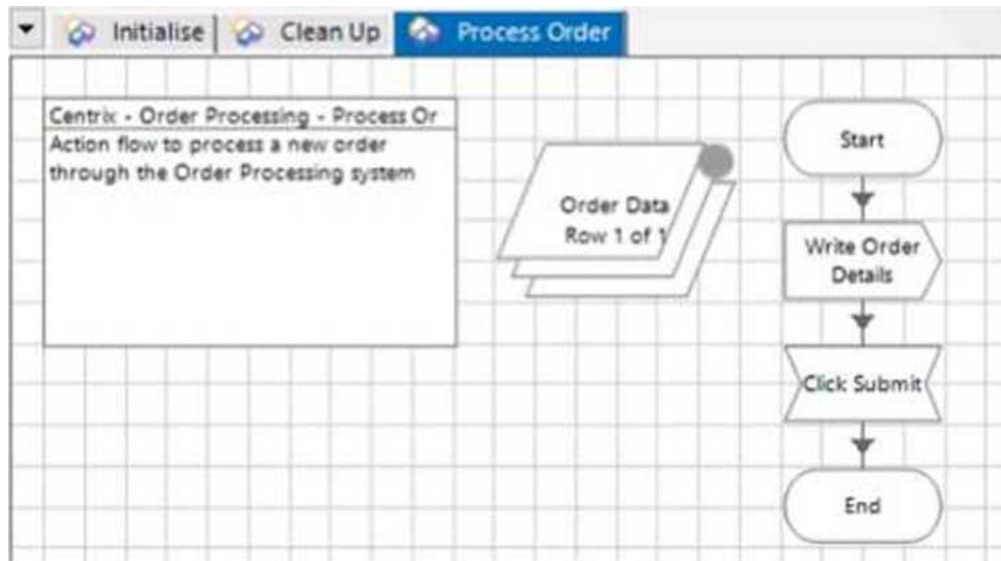
Explanation:

The parent ordinal attribute is the index of the parent element among its siblings in the application hierarchy. It can be used to help identify an element that has a dynamic or non-unique class name or ordinal by using its relative position to its parent element¹. In this case, the password field has a class name of 'Edit' and an ordinal of 1, which are not unique among other elements in the application. However, its parent element has a class name of 'Window' and an ordinal of 2, which can be used to distinguish it from other elements with the same class name and ordinal.

Reference: 1 <https://bpdocs.blueprism.com/bp-6-10/en-us/helpAttributes.htm>

Question: 73

Examine the following Business Object Action diagram:



The purpose of the Action is to process new orders through the order processing system. Order details of provided to the Action by the Process and stored in the 'Order Data' Collection According to Blue Prism best practices, what is wrong with this Action?

- A. A Single Row Collection cannot receive data from a Process
- B. A Wait stage is missing between the 'Click Submit' stage and the 'End' stage
- C. A Wait stage is missing between the 'Start' stage and the 'Write Order Details' stage
- D. An Action description has not been provided
- E. A Wait stage is missing after the 'Write Order Details' stage

Answer: E

Explanation:

A Wait stage is needed after the 'Write Order Details' stage to ensure that the application has time to process the order details before clicking the Submit button. Without a Wait stage, the automation may fail due to timing issues.

Reference: https://portal.blueprism.com/sites/default/files/2021-05/Blue%20Prism%20Certification%20-%20Associate%20Developer%20-%20Certification%20Overview_0.pdf (page 11)

Question: 74

What is a Dynamic attribute match type in Blue Prism?

- A. A Dynamic attribute match type automatically detects changes within the business application and adapts the match criteria accordingly
- B. Dynamic attribute match is not supported in Blue Prism
- C. A Dynamic attribute match type allows the Developer to specify the match value of the attribute from the Business Object flow diagram rather than use a value defined in Application Modeller
- D. A Dynamic attribute match type accepts a Collection of multiple possible match values and checks each of the values automatically

Answer: C

Explanation:

A Dynamic attribute match type enables the developer to use a data item or a calculation as the match value for an attribute, instead of a fixed value defined in Application Modeller. This allows for more flexibility and adaptability when automating applications that have dynamic elements.

Reference: https://portal.blueprism.com/sites/default/files/2021-05/Blue%20Prism%20Certification%20-%20Associate%20Developer%20-%20Certification%20Overview_0.pdf (page 12)



SAMPLE QUESTIONS

*These questions are for demo purpose only. **Full version** is up to date and contains actual questions and answers.*

Killexams.com is an online platform that offers a wide range of services related to certification exam preparation. The platform provides actual questions, exam dumps, and practice tests to help individuals prepare for various certification exams with confidence. Here are some key features and services offered by Killexams.com:

Actual Exam Questions: *Killexams.com provides actual exam questions that are experienced in test centers. These questions are updated regularly to ensure they are up-to-date and relevant to the latest exam syllabus. By studying these actual questions, candidates can familiarize themselves with the content and format of the real exam.*

Exam Dumps: *Killexams.com offers exam dumps in PDF format. These dumps contain a comprehensive collection of questions and answers that cover the exam topics. By using these dumps, candidates can enhance their knowledge and improve their chances of success in the certification exam.*

Practice Tests: *Killexams.com provides practice tests through their desktop VCE exam simulator and online test engine. These practice tests simulate the real exam environment and help candidates assess their readiness for the actual exam. The practice tests cover a wide range of questions and enable candidates to identify their strengths and weaknesses.*

Guaranteed Success: *Killexams.com offers a success guarantee with their exam dumps. They claim that by using their materials, candidates will pass their exams on the first attempt or they will refund the purchase price. This guarantee provides assurance and confidence to individuals preparing for certification exams.*

Updated Content: *Killexams.com regularly updates its question bank and exam dumps to ensure that they are current and reflect the latest changes in the exam syllabus. This helps candidates stay up-to-date with the exam content and increases their chances of success.*

Technical Support: *Killexams.com provides free 24x7 technical support to assist candidates with any queries or issues they may encounter while using their services. Their certified experts are available to provide guidance and help candidates throughout their exam preparation journey.*

For More exams visit <https://killexams.com/vendors-exam-list>
Kill your exam at First Attempt....Guaranteed!