



Up-to-date Questions and Answers from authentic resources to improve knowledge and pass the exam at very first attempt. ----- Guaranteed.



Fireware-Essentials Dumps  
Fireware-Essentials Braindumps  
Fireware-Essentials Real Questions  
Fireware-Essentials Practice Test  
Fireware-Essentials Actual Questions



**Watchguard**

## Fireware-Essentials

*Fireware Essentials*



<https://killexams.com/pass4sure/exam-detail/Fireware-Essentials>

### Question: 103

You configured four Device Administrator user accounts for your Firebox.

To see a report of which Device Management users have made changes to the device configuration, what must you do? (Select two.)

- A. Start Firebox System Manager for the device and review the activity for the Management Users on the Authentication List tab.
- B. Connect to Report Manager or Dimension and view the Audit Trail report for your device.
- C. Open WatchGuard Server Center and review the configuration history for managed devices.
- D. Configure your device to send audit trail log messages to your WatchGuard Log Server or Dimension Log Server.

**Answer: B,C**

### Question: 104

Which takes precedence: WebBlocker category match or a WebBlocker exception?

- A. WebBlocker exception
- B. WebBlocker category match

**Answer: B**

### Question: 105

From the Firebox System Manager >Authentication List tab, you can view all of the authenticated users connected to your Firebox and disconnect any of them.

- A. True
- B. False

**Answer: B**

### Question: 106

Users on the trusted network cannot browse Internet websites.

Order /	Action	Policy Name	Policy Type	From	To	Port
1	✓	FTP	FTP	Any-Trusted, Any-Optional	Any-External	tcp:21
2	✓	HTTP-proxy	HTTP-proxy	Any-Trusted, Any-Optional	Any-External	tcp:80
3	✓	HTTPS-proxy	HTTPS-proxy	Any-Trusted, Any-Optional	Any-External	tcp:443
4	✓	WatchGuard Authent...	WG-Auth	Any-Trusted, Any-Optional	Firebox	tcp:4100
5	✓	WatchGuard Web UI	WG-Fireware-X...	Any-Trusted, Any-Optional	Firebox	tcp:8080
6	✓	Ping	Ping	Any-Trusted, Any-Optional	Any	ICMP (type: 8, code: 255)
7	✓	WatchGuard	WG-Firebox-Mgmt	Any-Trusted, Any-Optional	Firebox	tcp:4105 tcp:4117 tcp:41...

Based on the configuration shown in this image, what could be the problem with this policy configuration? (Select one.)

- A. The default Outgoing policy has been removed and there is no policy to allow DNS traffic.
- B. The HTTP-proxy policy has higher precedence than the HTTPS-proxy policy.

- C. The HTTP-proxy policy is configured for the wrong port.
- D. The HTTP-proxy allows Any-Trusted and Any-Optional to Any-External.

**Answer: C**

### **Question: 107**

HOTSPOT

Match each WatchGuard Subscription Service with its function:

Uses full-system emulation analysis to identify characteristics and behavior of zero-day malware

Choose One

Choose One

Reputation Enabled Defense (RED)

Gateway AntiVirus

Data Loss Prevention (DLP)

spamBlocker

WebBlocker

Intrusion Prevention Service (IPS)

Application Control

Quarantine Server

APT Blocker

Manages use of applications on your network

Choose One

Choose One

Reputation Enabled Defense (RED)

Gateway AntiVirus

Data Loss Prevention (DLP)

spamBlocker

WebBlocker

Intrusion Prevention Service (IPS)

Application Control

Quarantine Server

APT Blocker

A repository where email messages can be sent based on analysis by spamBlocker, Gateway AntiVirus, or Data Loss Prevention

Choose One

Choose One

Reputation Enabled Defense (RED)

Gateway AntiVirus

Data Loss Prevention (DLP)

spamBlocker

WebBlocker

Intrusion Prevention Service (IPS)

Application Control

Quarantine Server

APT Blocker

Cloud based service that controls access to website based on a site's previous behavior

Choose One

Choose One

Reputation Enabled Defense (RED)

Gateway AntiVirus

Data Loss Prevention (DLP)

spamBlocker

WebBlocker

Intrusion Prevention Service (IPS)

Application Control

Quarantine Server

APT Blocker

Scans files to detect malicious software infections

Choose One

Choose One

Reputation Enabled Defense (RED)

Gateway AntiVirus

Data Loss Prevention (DLP)

spamBlocker

WebBlocker

Intrusion Prevention Service (IPS)

Application Control

Quarantine Server

APT Blocker

Prevents accidental or unauthorized transmission of confidential information outside your network

Choose One

Choose One

Reputation Enabled Defense (RED)

Gateway AntiVirus

Data Loss Prevention (DLP)

spamBlocker

WebBlocker

Intrusion Prevention Service (IPS)

Application Control

Quarantine Server

APT Blocker

Uses signatures to provide real-time protection against network attacks

Choose One

Choose One

Reputation Enabled Defense (RED)

Gateway AntiVirus

Data Loss Prevention (DLP)

spamBlocker

WebBlocker

Intrusion Prevention Service (IPS)

Application Control

Quarantine Server

APT Blocker

Uses rules, pattern matching, and sender reputation to block unwanted email messages

Choose One

Choose One

Reputation Enabled Defense (RED)

Gateway AntiVirus

Data Loss Prevention (DLP)

spamBlocker

WebBlocker

Intrusion Prevention Service (IPS)

Application Control

Quarantine Server

APT Blocker

Controls access to website based on content categories

Choose One

Choose One

Reputation Enabled Defense (RED)

Gateway AntiVirus

Data Loss Prevention (DLP)

spamBlocker

WebBlocker

Intrusion Prevention Service (IPS)

Application Control

Quarantine Server

APT Blocker

- wrong

**Answer: C**

Explanation:

WebBlocker

Spam Blocker

Gateway / Antivirus

APT Blocker

Application Control

Quarantee Server

Intrusion Prevention Server IPS

Data Loss Prvention DLP

Reputation Enable Defense RED

**Question: 108**

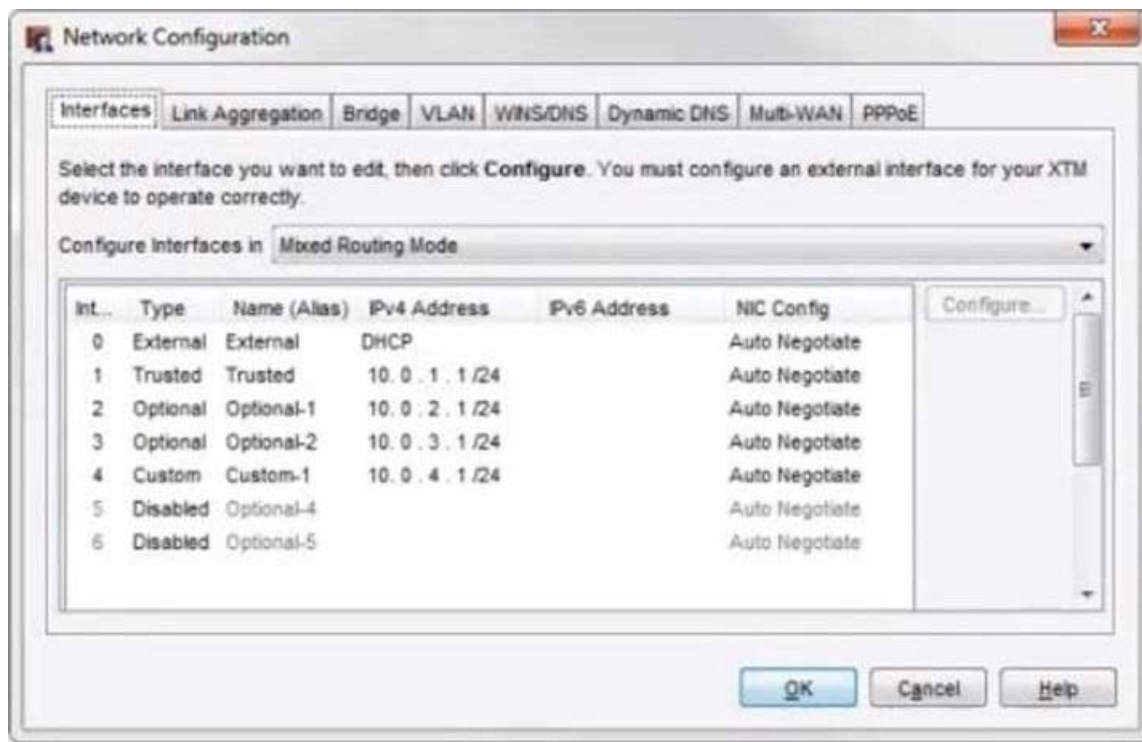
Which of these threats can the Firebox prevent with the default packet handling settings? (Select four.)

- A. Access to inappropriate websites
- B. Denial of service attacks
- C. Flood attacks
- D. Malware in downloaded files
- E. Port scans
- F. Viruses in email messages
- G. IP spoofing

**Answer: B,C,E,G**

**Question: 109**

In the network configuration in this image, which aliases is Eth2 a member of? (Select three.)



- A. Any-optional
- B. Any-External
- C. Optional-1
- D. Any
- E. Any-Trusted

Answer: A,C,D

### Question: 110

To enable remote devices to send log messages to Dimension through the gateway Firebox, what must you verify is included in your gateway Firebox configuration? (Select one.)

- A. You can only send log messages to Dimension from a computer that is on the network behind your gateway Firebox.
- B. You must change the connection settings in Dimension, not on the gateway Firebox.
- C. You must add a policy to the remote device configuration file to allow traffic to a Dimension.
- D. You must make sure that either the WG-Logging packet filter policy, or another policy that allows external connections to Dimension over port 4115, is included in the configuration file.

Answer: C

### Question: 111

An email newsletter about sales from an external company is sometimes blocked by spamBlocker.

What option could you choose to make sure the newsletter is delivered to your users? (Select one.)

- A. Add a spamBlocker exception based on the From field of the newsletter email.
- B. Set the spamBlocker action to quarantine the email for later retrieval.
- C. Add a spamBlocker subject tag for bulk email messages.

D. Set the spamBlocker virus outbreak detection action to allow emails from the newsletter source.

**Answer: C**

### **Question: 112**

You can use Firebox-DB authentication with any type of Mobile VPN.

- A. True
- B. False

**Answer: B**

### **Question: 113**

You can configure your Firebox to automatically redirect users to the Authentication Portal page.

- A. True
- B. False

**Answer: B**

### **Question: 114**

Your company denies downloads of executable files from all websites.

What can you do to allow users on the network to download executable files from the company's remote website? (Select one.)

- A. Add an HTTP proxy exception for the company's remote website.
- B. Create a WebBlocker exception to allow access to the company's remote website.
- C. Create an IPS exception.
- D. Create a Blocked Sites exception.
- E. Configure HTTP Request > URL Paths to allow the company's remote website.

**Answer: A**

### **Question: 115**

You have a privately addressed email server behind your Firebox.

If you want to make sure that all traffic from this server to the Internet appears to come from the public IP address 203.0.113.25, regardless of policies, which form of NAT would you use? (Select one.)

- A. In the SMTP policy that handles traffic from the email server, select the option to apply dynamic NAT to all traffic in the policy and set the source IP address 203.0.113.25.
- B. Create a global dynamic NAT rule for traffic from the email server and set the source IP address to 203.0.113.25.
- C. Create a static NAT action for traffic to the email server, and set the source IP address to 203.0.113.25.

**Answer: B**

### **Question: 116**

While troubleshooting a branch office VPN tunnel, you see this log message:

2014-07-23 12:29:15iked (203.0.113.10<->203.0.113.20) Peer proposes phase one encryption 3DES, expecting AES

What settings could you modify in the local device configuration to resolve this issue? (Select one.)

- A. BOVPN Gateway settings
- B. BOVPN-Allow policies
- C. BOVPN Tunnel settings
- D. BOVPN Tunnel Route settings

**Answer: A,B**

Explanation:

The WatchGuard BOVPN settings error in this example states phase one encryption. Only the BOVPN Gateway settings can specify phase one settings. BOVPN Tunnel settings specify phase 2 settings.

### **Question: 117**

Which WatchGuard tools can you use to review the log messages generated by your Firebox? (Select three).

- A. Firebox System Manager > Traffic Monitor
- B. Fireware XTM Web UI > Traffic Monitor
- C. Firebox System Manager > Status Report
- D. Dimension > Log manager
- E. WatchGuard System Manager > Policy Manager

**Answer: A,C,D**





# SAMPLE QUESTIONS

*These questions are for demo purpose only. **Full version** is up to date and contains actual questions and answers.*

*Killexams.com is an online platform that offers a wide range of services related to certification exam preparation. The platform provides actual questions, exam dumps, and practice tests to help individuals prepare for various certification exams with confidence. Here are some key features and services offered by Killexams.com:*

**Actual Exam Questions:** *Killexams.com provides actual exam questions that are experienced in test centers. These questions are updated regularly to ensure they are up-to-date and relevant to the latest exam syllabus. By studying these actual questions, candidates can familiarize themselves with the content and format of the real exam.*

**Exam Dumps:** *Killexams.com offers exam dumps in PDF format. These dumps contain a comprehensive collection of questions and answers that cover the exam topics. By using these dumps, candidates can enhance their knowledge and improve their chances of success in the certification exam.*

**Practice Tests:** *Killexams.com provides practice tests through their desktop VCE exam simulator and online test engine. These practice tests simulate the real exam environment and help candidates assess their readiness for the actual exam. The practice tests cover a wide range of questions and enable candidates to identify their strengths and weaknesses.*

**Guaranteed Success:** *Killexams.com offers a success guarantee with their exam dumps. They claim that by using their materials, candidates will pass their exams on the first attempt or they will refund the purchase price. This guarantee provides assurance and confidence to individuals preparing for certification exams.*

**Updated Content:** *Killexams.com regularly updates its question bank and exam dumps to ensure that they are current and reflect the latest changes in the exam syllabus. This helps candidates stay up-to-date with the exam content and increases their chances of success.*

**Technical Support:** *Killexams.com provides free 24x7 technical support to assist candidates with any queries or issues they may encounter while using their services. Their certified experts are available to provide guidance and help candidates throughout their exam preparation journey.*

For More exams visit <https://killexams.com/vendors-exam-list>  
Kill your exam at First Attempt....Guaranteed!