



*Up-to-date Questions and Answers from authentic resources to improve knowledge and pass the exam at very first attempt. ----- Guaranteed.*



ISEB-BA1 Dumps  
ISEB-BA1 Braindumps  
ISEB-BA1 Real Questions  
ISEB-BA1 Practice Test  
ISEB-BA1 Actual Questions



**ISEB**

**ISEB-BA1**

*Foundation Certificate in Business Analysis*



<https://killexams.com/pass4sure/exam-detail/ISEB-BA1>

**QUESTION: 151**

The senior managers of an organisation recognise that they employ knowledgeable, committed staff. Under which category of a SWOT will this be recorded?

- A. Weaknesses,
- B. Opportunities.
- C. Threats.
- D. Strengths.

**Answer: D**

**QUESTION: 152**

Which of the following represents the total cash flows of an investment, over a period of time, adjusted to reflect the time value of money?

- A. The Internal Rate of Return.
- B. The Time to Payback.
- C. The Net Present Value.
- D. The Return on Investment.

**Answer: C**

**QUESTION: 153**

A business analyst wishes to show that a company wants to store information about different types of product. Some attributes are common to every product (for example; product name) but other attributes only apply to certain product types. For example, product material only applies to accessory products. Which of the following constructs could the business analyst use to represent this on a class model?

- A. An association class.
- B. A many-to-many multiplicity.
- C. A generalisation structure.
- D. An <<extend>> structure.

**Answer: C**

**QUESTION: 154**

Which of the following would BEST be managed with the "keep satisfied" stakeholder management strategy?

- A. Those with high power/influence and no interest in the project.
- B. Those with high power/influence and some interest in the project.
- C. Those with some power/influence and high interest in the project.
- D. Those with some power/influence and some interest in the project.

**Answer:** B

**QUESTION:** 155

Which of the following would be an appropriate name for a use case that allows a project manager to allocate resources to a project?

- A. Assign resources.
- B. Resource.
- C. Project Manager.
- D. Project.

**Answer:** A

**QUESTION:** 156

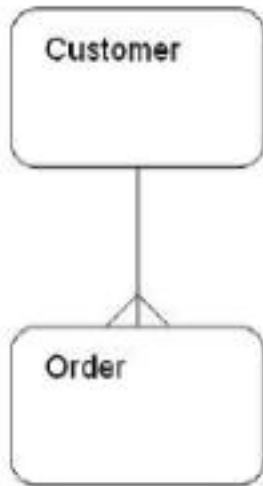
Which of the following lists includes only activities that are defined as support activities in the value chain?

- A. Firm infrastructure, service, marketing and sales.
- B. Inbound logistics, outbound logistics, operations.
- C. Procurement, technology development, human resource management.
- D. Service, procurement, firm infrastructure.

**Answer:** C

**QUESTION:** 157

The entity relationship model below shows the relationship between Customer and Order. Which of the following business rules is correct?



- A. An order may be placed by many customers.
- B. A customer may place many orders.
- C. A customer may never place an order.
- D. An order need not be placed by a customer.

**Answer:** B

**QUESTION:** 158

What is the business analyst doing when he or she compares the BAM with the current business situation?

- A. Conceptual modelling.
- B. Analysing perspective.
- C. Gap analysis.
- D. Defining CATVVOE.

**Answer:** C

**QUESTION:** 159

An IT department needs to upgrade its hardware to run the new version of an established operating system. The cost of this required upgrade is \$2 million. As an alternative, the IT director has suggested that the company should change to a completely different operating system. Although this will cost \$6 million, the change will bring many other benefits, including cheaper maintenance costs and increased security. What is the avoided cost in his proposal?

- A. \$2 million.
- B. \$4 million.
- C. \$6 million.
- D. \$8 million.

**Answer:** A

**QUESTION:** 160

Which of the following actions could sustain business change?

- A. Develop the coaching skills of selected staff members.
- B. Establish clear benefits for selected, powerful stakeholders.
- C. Retain the previous system and its associated processes.
- D. Ensure that improved staff performance is not rewarded.

**Answer:** A



# SAMPLE QUESTIONS

*These questions are for demo purpose only. **Full version** is up to date and contains actual questions and answers.*

*Killexams.com is an online platform that offers a wide range of services related to certification exam preparation. The platform provides actual questions, exam dumps, and practice tests to help individuals prepare for various certification exams with confidence. Here are some key features and services offered by Killexams.com:*

**Actual Exam Questions:** *Killexams.com provides actual exam questions that are experienced in test centers. These questions are updated regularly to ensure they are up-to-date and relevant to the latest exam syllabus. By studying these actual questions, candidates can familiarize themselves with the content and format of the real exam.*

**Exam Dumps:** *Killexams.com offers exam dumps in PDF format. These dumps contain a comprehensive collection of questions and answers that cover the exam topics. By using these dumps, candidates can enhance their knowledge and improve their chances of success in the certification exam.*

**Practice Tests:** *Killexams.com provides practice tests through their desktop VCE exam simulator and online test engine. These practice tests simulate the real exam environment and help candidates assess their readiness for the actual exam. The practice tests cover a wide range of questions and enable candidates to identify their strengths and weaknesses.*

**Guaranteed Success:** *Killexams.com offers a success guarantee with their exam dumps. They claim that by using their materials, candidates will pass their exams on the first attempt or they will refund the purchase price. This guarantee provides assurance and confidence to individuals preparing for certification exams.*

**Updated Content:** *Killexams.com regularly updates its question bank and exam dumps to ensure that they are current and reflect the latest changes in the exam syllabus. This helps candidates stay up-to-date with the exam content and increases their chances of success.*

**Technical Support:** *Killexams.com provides free 24x7 technical support to assist candidates with any queries or issues they may encounter while using their services. Their certified experts are available to provide guidance and help candidates throughout their exam preparation journey.*

For More exams visit <https://killexams.com/vendors-exam-list>  
Kill your exam at First Attempt....Guaranteed!