



*Up-to-date Questions and Answers from authentic resources to improve knowledge and pass the exam at very first attempt. ----- Guaranteed.*



SC0-451 Dumps  
SC0-451 Braindumps  
SC0-451 Real Questions  
SC0-451 Practice Test  
SC0-451 Actual Questions



**SCP**

# SC0-451

*Tactical Perimeter Defense*



<https://killexams.com/pass4sure/exam-detail/SC0-451>

**QUESTION: 169**

You are considering your options for a new firewall deployment. At which two layers of the OSI model does a simple (stateless) packet filtering firewall operate?

- A. Data Link
- B. Application
- C. Session
- D. Presentation
- E. Network

**Answer:** A,E

**QUESTION: 170**

The following exhibit is a screen shot of a capture using Network Monitor. Examine the details as shown for a frame and identify which of the statements that follow best describes it.

```
==Frame: Base frame properties
  Frame: Time of capture = 8/8/2001 22:23:13.744
  Frame: Time delta from previous physical frame: 0 microseconds
  Frame: Frame number: 1
  Frame: Total frame length: 42 bytes
  Frame: Capture frame length: 42 bytes
  Frame: Frame data: Number of data bytes remaining = 42 (0x002A)
==ETHERNET: ETYPE = 0x0806 : Protocol = ARP: Address Resolution Protocol
  ==ETHERNET: Destination address : FFFFFFFFFF
    ETHERNET: .....1 = Group address
    ETHERNET: .....1. = Locally administered address
  ==ETHERNET: Source address : 0002B32C5B13
    ETHERNET: .....0 = No routing information present
    ETHERNET: .....0. = Universally administered address
  ETHERNET: Frame Length : 42 (0x002A)
  ETHERNET: Ethernet Type : 0x0806 (ARP: Address Resolution Protocol)
  ETHERNET: Ethernet Data: Number of data bytes remaining = 28 (0x001C)
```

- A. This frame represents an ICMP echo message between the two hosts
- B. This frame represents an IP broadcast trying to resolve the target IP address to its MAC address
- C. This frame represents an Ethernet broadcast trying to resolve the target IP address to its MAC address
- D. This frame represents a reply from the target machine with the appropriate resolution
- E. This frame represents the first fragment of the three-way handshake.

**Answer:** C

**QUESTION:** 171

Which of the following is a potential weakness of a commercial firewall product that is installed on a hardened machine?

- A. That you will not be able to use it in conjunction with personal firewalls on user's desktop machines.
- B. You will have to give the vendor confidential network information.
- C. You will be required to use the configuration that the vendor assigns you.
- D. That the firewall's vendor may be compromised and your private information may publicly available.
- E. That it may be vulnerable to attacks targeting the underlying Operating System.

**Answer:** E

**QUESTION:** 172

Which of the following is a potential weakness of a commercial firewall product that is installed on a hardened machine?

- A. That you will not be able to use it in conjunction with personal firewalls on user's desktop machines.
- B. You will have to give the vendor confidential network information.
- C. You will be required to use the configuration that the vendor assigns you.
- D. That the firewall's vendor may be compromised and your private information may publicly available.
- E. That it may be vulnerable to attacks targeting the underlying Operating System.

**Answer:** E

**QUESTION:** 173

In order to perform promiscuous mode captures using the Wireshark capture tool on a Windows Server 2003 machine, what must first be installed?

- A. IPv4 stack
- B. IPv6 stack
- C. WinPcap
- D. Nothing, it will capture by default
- E. At least two network adapters

**Answer:** C

**QUESTION:** 174

You have found a user in your organization who has managed to gain access to a system that this user was not granted the right to use. This user has just provided you with a working example of which of the following?

- A. Intrusion
- B. Misuse
- C. Intrusion detection
- D. Misuse detection
- E. Anomaly detection

**Answer:** A

**QUESTION:** 175

You have recently been contracted to implement a new firewall solution at a client site. What are the two basic forms firewall implementations?

- A. Chaining
- B. Stateful
- C. DMZ
- D. Stateless
- E. KMZ

**Answer:** B,D

**QUESTION:** 176

You are considering your options for a new firewall deployment. At which two layers of the OSI model does a simple (stateless) packet filtering firewall operate?

- A. Data Link
- B. Application
- C. Session
- D. Presentation
- E. Network

**Answer:** A,E

**QUESTION: 177**

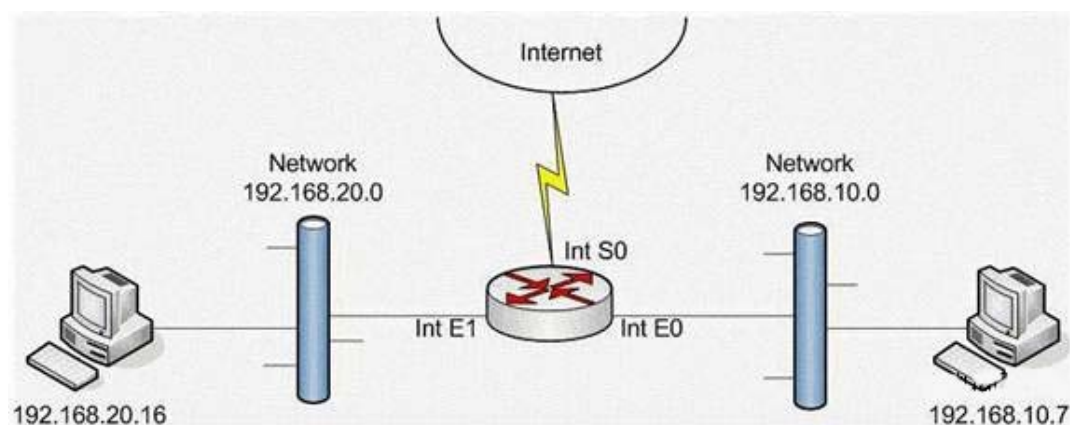
Your organization has extensive resources that you must make available to authorized users, through your ISA Server 2006. From the following answers, select the one that is not a feature of ISA Server Content Publishing:

- A. Secure Sockets Layer (SSL) Bridging
- B. Web Caching and Delivery
- C. Web Publishing Load Balancing
- D. Enhanced Multi-factor Authentication
- E. Robust Logging and Reporting

**Answer: B**

**QUESTION: 178**

The exhibit shows a router with three interfaces EO, E1 and SO. Interfaces EO and E1 are connected to internal networks 192.168.10.0 and 192.168.20.0 respectively and interface SO is connected to the Internet. The objective is to allow only network 192.168.20.0 to access e-commerce Web sites on the Internet, while allowing all internal hosts to access resources within the internal network. From the following, select all the access list statements that are required to make this possible.



- A. access-list 113 permit tcp 192.168.20.0 0.0.0.255 any eq 80
- B. access-list 113 permit tcp 192.168.20.0 0.0.0.255 any eq 53
- C. access-list 113 permit tcp 192.168.20.0 0.0.0.255 any eq 443
- D. access-list 113 permit tcp 192.168.20.0 0.0.0.255 any It 1023
- E. int SO, ip access-group 113 in
- F. int E1, ip access-group 113 in
- G. int SO, ip access-group 113 out

**Answer: A,B,C,G**

**QUESTION:** 179.

In your office, you are building the new wireless network, and you will need to install several access points. What do wireless access points use to counter multipath interference?

- A. Multiple encryption algorithms
- B. Multiple Antennas
- C. Multiple radio frequencies
- D. Duplicate packet transfer
- E. Secondary transmissions

**Answer:** B

**QUESTION:** 180.

One of the firewall choices you are thinking of implementing, in your network, is a proxy server. A proxy server can accomplish which of the following statements?

- A. Cache web pages for increased performance
- B. Operate at the Application layer of the OSI model
- C. Allow direct communication between an internal and external host
- D. Permit or deny traffic based upon type of service
- E. Filter executables that are attached to an e-mail

**Answer:** A,B,D,E



# SAMPLE QUESTIONS

*These questions are for demo purpose only. **Full version** is up to date and contains actual questions and answers.*

*Killexams.com is an online platform that offers a wide range of services related to certification exam preparation. The platform provides actual questions, exam dumps, and practice tests to help individuals prepare for various certification exams with confidence. Here are some key features and services offered by Killexams.com:*

**Actual Exam Questions:** *Killexams.com provides actual exam questions that are experienced in test centers. These questions are updated regularly to ensure they are up-to-date and relevant to the latest exam syllabus. By studying these actual questions, candidates can familiarize themselves with the content and format of the real exam.*

**Exam Dumps:** *Killexams.com offers exam dumps in PDF format. These dumps contain a comprehensive collection of questions and answers that cover the exam topics. By using these dumps, candidates can enhance their knowledge and improve their chances of success in the certification exam.*

**Practice Tests:** *Killexams.com provides practice tests through their desktop VCE exam simulator and online test engine. These practice tests simulate the real exam environment and help candidates assess their readiness for the actual exam. The practice tests cover a wide range of questions and enable candidates to identify their strengths and weaknesses.*

**Guaranteed Success:** *Killexams.com offers a success guarantee with their exam dumps. They claim that by using their materials, candidates will pass their exams on the first attempt or they will refund the purchase price. This guarantee provides assurance and confidence to individuals preparing for certification exams.*

**Updated Content:** *Killexams.com regularly updates its question bank and exam dumps to ensure that they are current and reflect the latest changes in the exam syllabus. This helps candidates stay up-to-date with the exam content and increases their chances of success.*

**Technical Support:** *Killexams.com provides free 24x7 technical support to assist candidates with any queries or issues they may encounter while using their services. Their certified experts are available to provide guidance and help candidates throughout their exam preparation journey.*

For More exams visit <https://killexams.com/vendors-exam-list>  
Kill your exam at First Attempt....Guaranteed!