



Up-to-date Questions and Answers from authentic resources to improve knowledge and pass the exam at very first attempt. ----- Guaranteed.



SCNS-EN Dumps
SCNS-EN Braindumps
SCNS-EN Real Questions
SCNS-EN Practice Test
SCNS-EN Actual Questions



Exin

SCNS-EN

SCNS Tactical Perimeter Defense



<https://killexams.com/pass4sure/exam-detail/SCNS-EN>

- A. The MAC Address, the IP Address and the IP Protocol ID
- B. The IP Address, the IP Protocol ID and a Port number
- C. The MAC Address and the IP Protocol ID
- D. The MAC Address, the IP Protocol ID and a Port number
- E. The Ethertype and a Port number

Answer: B

QUESTION: 224

In an ICMP Message, what is the function of the first eight bits?

- A. To define the source port number
- B. To define the type
- C. To define the destination port number
- D. To define the IP Version
- E. To define the upper layer protocol

Answer: B

QUESTION: 225

You are introducing a co-worker to the security systems in place in your organization. Early in the discussion you begin talking about the network, and how it is implemented. You decide to run a packet capture to identify different aspects of network traffic for your co-worker. In the packet capture you are able to identify Protocol IDs. Which of the following is the IP Protocol ID for UDP?

- A. Protocol ID 51
- B. Protocol ID 21
- C. Protocol ID 6
- D. Protocol ID 17
- E. Protocol ID 11

Answer: D

QUESTION: 226

In order to properly manage the network traffic in your organization, you need a complete understanding of protocols and networking models. In regards to the 7-layer OSI model, what is the function of the Network Layer?

- A. The Network layer allows two applications on different computers to establish, use, and end a session. This layer establishes dialog control between the two computers in a session, regulating which side transmits, plus when and how long it transmits.
- B. The Network layer manages logical addresses. It also determines the route from the source to the destination computer and manages traffic problems, such as routing, and controlling the congestion of data packets.
- C. The Network layer packages raw bits from the Physical (Layer 1) layer into frames (structured packets for data). Physical addressing (as opposed to network or logical addressing) defines how devices are addressed at the data link layer. This layer is responsible for transferring frames from one computer to another, without errors. After sending a frame, it waits for an acknowledgment from the receiving computer.
- D. The Network layer transmits bits from one computer to another and regulates the transmission of a stream of bits over a physical medium. For example, this layer defines how the cable is attached to the network adapter and what transmission technique is used to send data over the cable.
- E. The Network layer handles error recognition and recovery. It also repackages long messages, when necessary, into small packets for transmission and, at the receiving end, rebuilds packets into the original message. The corresponding Network layer at the receiving end also sends receipt acknowledgments.

Answer: B

QUESTION: 227

You are using Network Monitor to capture some traffic for later analysis. When you do begin to look at your captured data, you examine the TCP traffic you captured. In a TCP Header, what is the function of the first sixteen bits?

- A. To define the type
- B. To define the IP Version
- C. To define the destination port number
- D. To define the upper layer protocol
- E. To define the source port number

Answer: E

QUESTION: 228

If you configure an access-list to block the following networks, what are you trying to protect against? Network 127.0.0.0/8, Network 0.0.0.0/0, Network 10.0.0.0/8, Network 172.16.0.0/16, and Network 168.0.0/16.

- A. You are trying to protect against hijacking
- B. You are trying to protect against spoofing
- C. You are trying to protect against sniffing
- D. You are trying to protect against splicing
- E. You are trying to protect against capturing

Answer: B

QUESTION: 229

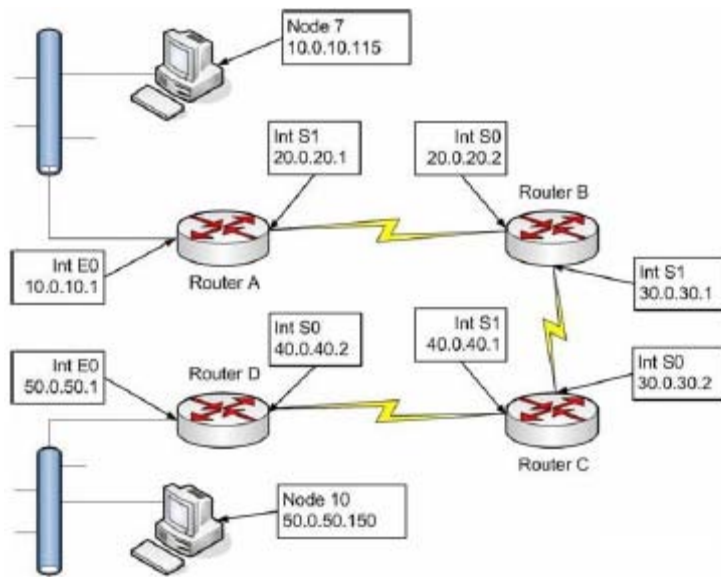
You are a host in a network segment that has IP addresses in the range of 168.16.1~192.168.31.254. You need to create an access control list that will filter your segment of addresses. Which of the following is the wildcard mask that will be used to filter your network segment?

- A. 10.0.16.1/20
- B. 0.0.16.254
- C. 255.240.0.0
- D. 0.0.240.0
- E. 0.0.15.255

Answer: E

QUESTION: 230

The exhibit represents a simple routed network. Node 7 is a Windows NT 4.0 Workstation that establishes a TCP communication with Node 10, a Windows 2000 Professional host. The routers are Cisco 2500 series running IOS 11.2. While working at Node 10, you run a packet capture. When Node 10 receives a packet sent by Node 7, what will the capture reveal is the source MAC address?



- A. Interface for Node 7
- B. Interface E0 of Router A
- C. Interfaces for both Nodes 7 and E0
- D. Interface E0 of Router D
- E. Interface for Node 10

Answer: D

QUESTION: 231

During a network capture, using Wireshark, you capture some ICMP traffic for analysis. In an ICMP Message, what is the function of the first eight bits?

- A. To define the source port number
- B. To define the type
- C. To define the destination port number
- D. To define the IP Version
- E. To define the upper layer protocol

Answer: B

QUESTION: 232

A router has two active Ethernet interfaces. Interface E0 is connected to network 10.10.0.0/16 while Interface E1 is connected to network 10.10.0.0/16. You are configuring access control lists

to manage specific access, which is disallowed on these segments. The configuration of the lists are as follows:

```
router(config)#access-list 123 deny tcp 10.11.0.0 0.0.255.255 10.10.0.0 0.0.255.255 eq 20
router(config)#access-list 123 deny tcp 10.11.0.0 0.0.255.255 10.10.0.0 0.0.255.255 eq 21
router(config)#access-list 123 deny tcp 10.10.0.0 0.0.255.255 10.11.0.0 0.0.255.255 eq 20
router(config)#access-list 123 deny tcp 10.10.0.0 0.0.255.255 10.11.0.0 0.0.255.255 eq 21
router(config)#access-list 123 permit tcp 0.0.0.0 255.255.255.255 0.0.0.0 255.255.255.255
router(config)#Interface Ethernet 0
```

router(config-if)#ip access-group 123 in router(config-if)#Interface Ethernet 1 router(config-if)#ip access-group 123 in Based on the above list configuration, which of the following statements is true on the router?

- A. All packets will be dropped
- B. All packets that match the deny statements will be forwarded to the console port
- C. All packets that do not match the deny statements will be allowed
- D. An Access List cannot simultaneously be implemented upon two or more interfaces
- E. We do not know if this is a standard or extended access list, therefore there is not enough information.

Answer: A



SAMPLE QUESTIONS

*These questions are for demo purpose only. **Full version** is up to date and contains actual questions and answers.*

Killexams.com is an online platform that offers a wide range of services related to certification exam preparation. The platform provides actual questions, exam dumps, and practice tests to help individuals prepare for various certification exams with confidence. Here are some key features and services offered by Killexams.com:

Actual Exam Questions: *Killexams.com provides actual exam questions that are experienced in test centers. These questions are updated regularly to ensure they are up-to-date and relevant to the latest exam syllabus. By studying these actual questions, candidates can familiarize themselves with the content and format of the real exam.*

Exam Dumps: *Killexams.com offers exam dumps in PDF format. These dumps contain a comprehensive collection of questions and answers that cover the exam topics. By using these dumps, candidates can enhance their knowledge and improve their chances of success in the certification exam.*

Practice Tests: *Killexams.com provides practice tests through their desktop VCE exam simulator and online test engine. These practice tests simulate the real exam environment and help candidates assess their readiness for the actual exam. The practice tests cover a wide range of questions and enable candidates to identify their strengths and weaknesses.*

Guaranteed Success: *Killexams.com offers a success guarantee with their exam dumps. They claim that by using their materials, candidates will pass their exams on the first attempt or they will refund the purchase price. This guarantee provides assurance and confidence to individuals preparing for certification exams.*

Updated Content: *Killexams.com regularly updates its question bank and exam dumps to ensure that they are current and reflect the latest changes in the exam syllabus. This helps candidates stay up-to-date with the exam content and increases their chances of success.*

Technical Support: *Killexams.com provides free 24x7 technical support to assist candidates with any queries or issues they may encounter while using their services. Their certified experts are available to provide guidance and help candidates throughout their exam preparation journey.*

For More exams visit <https://killexams.com/vendors-exam-list>
Kill your exam at First Attempt....Guaranteed!