



Up-to-date Questions and Answers from authentic resources to improve knowledge and pass the exam at very first attempt. ----- Guaranteed.



PEGAPCRSA80V1_2019 Dumps
PEGAPCRSA80V1_2019 Braindumps
PEGAPCRSA80V1_2019 Real Questions
PEGAPCRSA80V1_2019 Practice Test
PEGAPCRSA80V1_2019 Actual Questions



Pegasystems

PEGAPCRSA80V1_2019

Pega Certified Robotics System Architect 80V1 2019



https://killexams.com/pass4sure/exam-detail/PEGAPCRSA80V1_2019

Question: 50

You have extracted a proxy for a data set and are using it to pass the data into a procedure automation input parameter. In the procedure automation, the data link from the input parameter is not connecting to the stringValue on a stringUtils method.

What two troubleshooting steps do you perform to correct the issue? (Choose two.)

- A. Confirm the proxy data in a messageDialog.**
- B. Confirm the stringUtils method works.**
- C. Confirm the data type on the procedure automation input parameter.**
- D. Confirm the proxy's data type matches with the stringUtils method.**

Answer: AC

Question: 51

There are two basic types of automations: events and procedures. Which three statements describe a procedure automation? (Choose three.)

- A. It performs business logic and may interact with applications.**
- B. It is triggered by a user or application action.**
- C. It may contain more than one starting block.**
- D. It contains an entry point and should contain at least one exit point.**
- E. It should return a string value for messaging.**

Answer: CDE

Question: 52

You are automating the login process for a web application. There are three possible scenarios that may occur: (1) You may successfully login, (2) you may not be successful logging in, or (3) you may log in but go to the change password screen.

Which control from the Toolbox do you use to determine which page you were on after performing the login function?

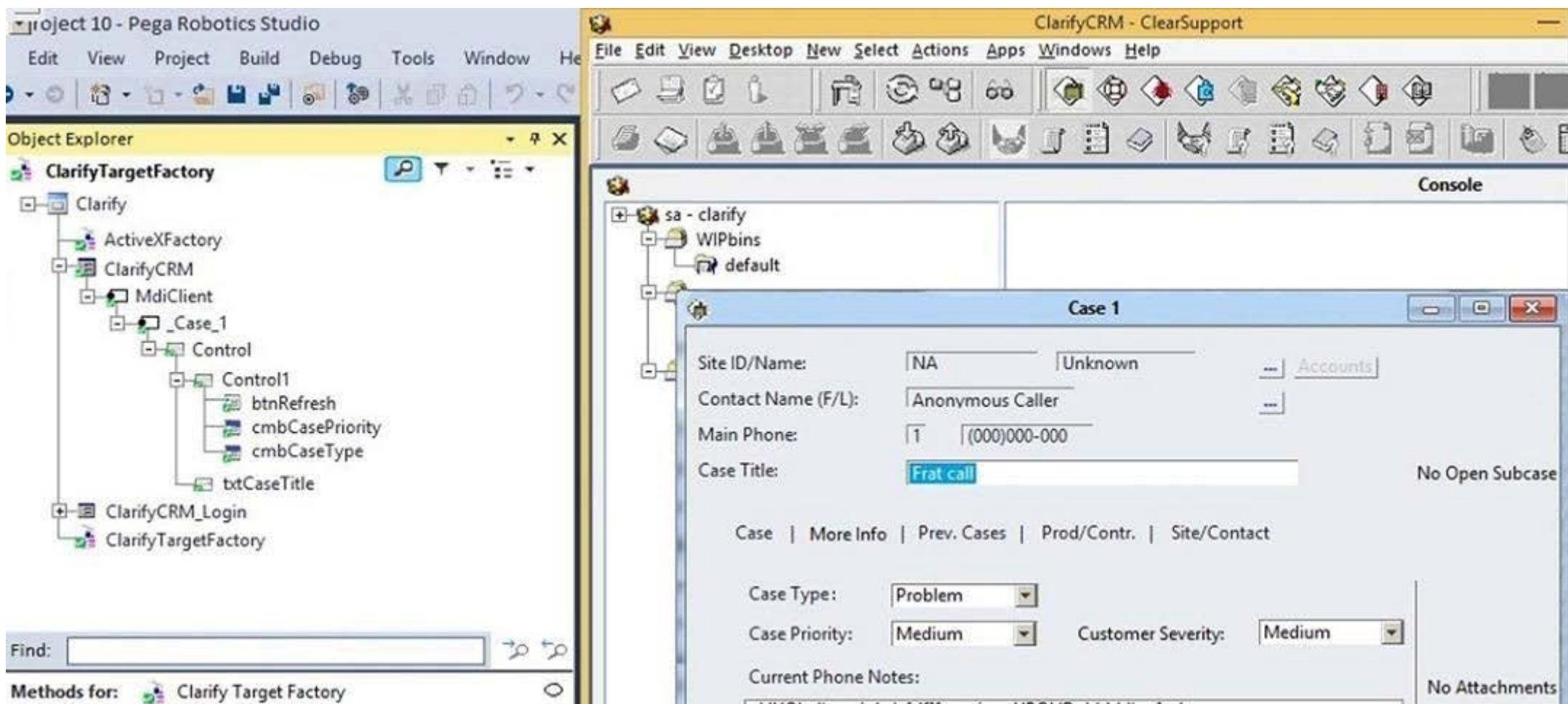
- A. WaitAll**
- B. Switch**
- C. WaitAny**
- D. Signal**

Answer: C

Question: 53

During application discovery of a Clarify application, you determine that the user accesses more than one customer case concurrently within the application, which creates multiple windows of the same type. This requires you to enable the UseKeys property on an application's object.

Based on the image that shows the application and the matched controls in the Object Explorer, which control's UseKeys property must be set to True?



- A. ClarifyCRM
- B. MdiClient
- C. _Case_1
- D. Control

Answer: A

Reference: <https://community.pega.com/knowledgebase/articles/how-do-i-use-keys-navigate-between-multiple-instances-object>

Question: 54

HOTSPOT

Pega Robot Studio provides five rules on how to differentiate between cloneable application objects when using key assignments in automations. The first rule states that an event creates the instance to set the context of a cloneable object. The remaining four rules state the requirements for a key assignment.

In the Answer Area, determine if each rule description requires a key assignment.

Hot Area:

Answer Area

Rule Description

An event from Child Context to Parent Context

An event from Parent Context to Child Context

Logic within the same context

An event from No Context to a Context

Key Assignment Required?

	▼
Requires a key assignment	
Does not require a key assignment	

	▼
Requires a key assignment	
Does not require a key assignment	

	▼
Requires a key assignment	
Does not require a key assignment	

	▼
Requires a key assignment	
Does not require a key assignment	

Answer:

Answer Area

Rule Description

An event from Child Context to Parent Context

An event from Parent Context to Child Context

Logic within the same context

An event from No Context to a Context

Key Assignment Required?

	▼
Requires a key assignment	
Does not require a key assignment	

	▼
Requires a key assignment	
Does not require a key assignment	

	▼
Requires a key assignment	
Does not require a key assignment	

	▼
Requires a key assignment	
Does not require a key assignment	

Question: 55

You need to configure an application to store encrypted login credentials in the user's local profile. You also need to automate the login using these encrypted credentials.

- How do you fulfill this requirement without creating an automation?
- A. Create a robot activity that performs the application login.**
 - B. Set the necessary adapter credential properties prior to interrogating the target controls.**
 - C. Interrogate the target controls and set the necessary adapter credential properties.**
 - D. Interrogate the target controls and create a script to perform the login functionality.**

Answer: A

Reference: <https://community.pega.com/knowledgebase/articles/pega-robotic-automation/encryption-and-assisted-sign-component>

Question: 56

Pega Robotic Coding Standards suggest organization of project components. You have added the _GC_CRM project item to the CRMPj. Which three components are recommended to be placed in the _GC_CRM project item? (Choose three.)

- A. ForLoop**
- B. Switch**
- C. stringUtils**
- D. messageDialog**
- E. dateTimeUtils**

Answer: CDE

Question: 57

Which of the following controls cannot be added to the Windows form?

- A. ComboBox**
- B. ProgressBar**
- C. Pointer**
- D. PictureBox**

Answer: C

Question: 58

You add a MessageDialog component to an automation. Based on the following image, which option shows the configuration settings that generates the message dialog?







A.

messageDialog2
Show
The account does not occur. ...
caption
+Result

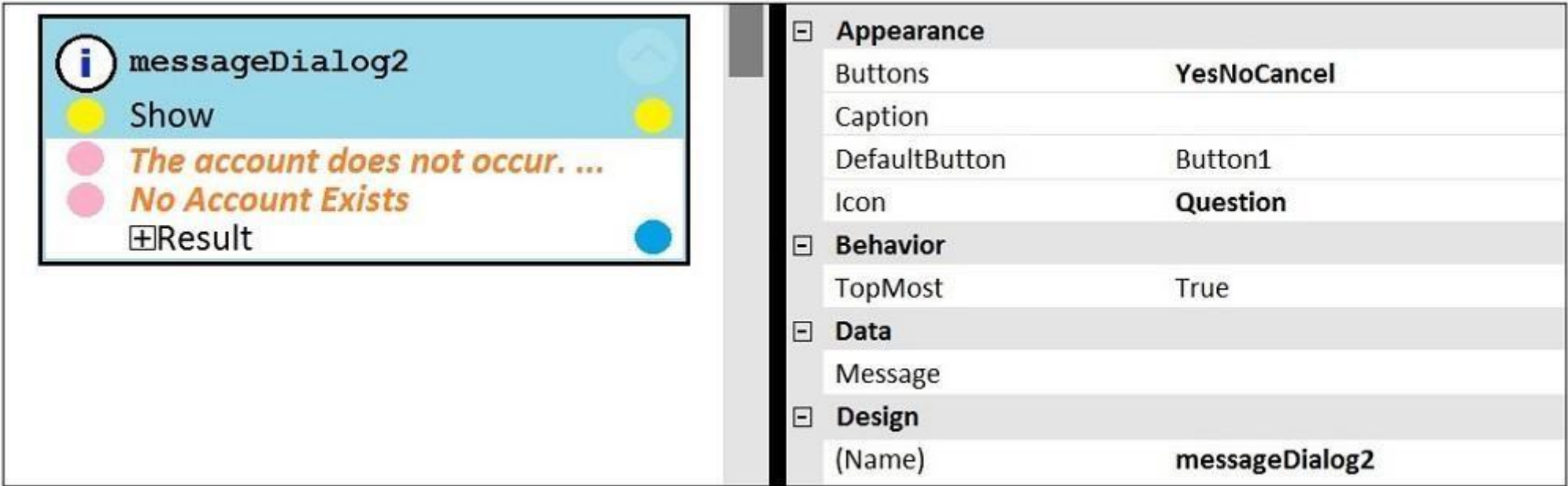
B.

 Appearance	
Buttons	YesNoCancel
Caption	
DefaultButton	Button2
Icon	Question
 Behavior	
TopMost	True
 Data	
Message	
 Design	
(Name)	messageDialog2

C.

 Appearance	
Buttons	YesNoCancel
Caption	
DefaultButton	Button2
Icon	None
 Behavior	
TopMost	True
 Data	
Message	
 Design	
(Name)	messageDialog2

D.



Answer: D

Question: 59

You are designing an automation that adds new customers to an online insurance web site. If a customer exists, a pop-up window is displayed with an error message, which closes automatically after 35 seconds.

While debugging the automation, you notice that you are receiving a control not created exception message in the Add Customer procedure after a page navigation occurs. How do you resolve the exception?

A. Add a missing created event in the Add Customer procedure.

B. Ensure the waitForCreate timeout is longer than 35 seconds in the Add Customer procedure.

C. Ensure the isCreated timeout is longer than 35 seconds in the Add Customer procedure.

D. Add a missing waitForEvent.Exists method in the Add Customer procedure.

Answer: D

Question: 60

Select two statements that correctly describe adapters. (Choose two.)

A. Adapters have accessible properties, methods, and events that launch, monitor, and expose enterprise applications for automation.

B. An adapter allows users to integrate with an application built on a specific platform.

C. An adapter orchestrates the deployment of a robotic solution and monitors the robots of the robot worker pool.

D. An adapter integrates with Windows applications by using a self-hosted REST service through application JavaScript.

Answer: AB

Reference: <https://community1.pega.com/community/product-support/question/adapter-pega-robotics>



SAMPLE QUESTIONS

*These questions are for demo purpose only. **Full version** is up to date and contains actual questions and answers.*

Killexams.com is an online platform that offers a wide range of services related to certification exam preparation. The platform provides actual questions, exam dumps, and practice tests to help individuals prepare for various certification exams with confidence. Here are some key features and services offered by Killexams.com:

Actual Exam Questions: *Killexams.com provides actual exam questions that are experienced in test centers. These questions are updated regularly to ensure they are up-to-date and relevant to the latest exam syllabus. By studying these actual questions, candidates can familiarize themselves with the content and format of the real exam.*

Exam Dumps: *Killexams.com offers exam dumps in PDF format. These dumps contain a comprehensive collection of questions and answers that cover the exam topics. By using these dumps, candidates can enhance their knowledge and improve their chances of success in the certification exam.*

Practice Tests: *Killexams.com provides practice tests through their desktop VCE exam simulator and online test engine. These practice tests simulate the real exam environment and help candidates assess their readiness for the actual exam. The practice tests cover a wide range of questions and enable candidates to identify their strengths and weaknesses.*

Guaranteed Success: *Killexams.com offers a success guarantee with their exam dumps. They claim that by using their materials, candidates will pass their exams on the first attempt or they will refund the purchase price. This guarantee provides assurance and confidence to individuals preparing for certification exams.*

Updated Content: *Killexams.com regularly updates its question bank and exam dumps to ensure that they are current and reflect the latest changes in the exam syllabus. This helps candidates stay up-to-date with the exam content and increases their chances of success.*

Technical Support: *Killexams.com provides free 24x7 technical support to assist candidates with any queries or issues they may encounter while using their services. Their certified experts are available to provide guidance and help candidates throughout their exam preparation journey.*

For More exams visit <https://killexams.com/vendors-exam-list>
Kill your exam at First Attempt....Guaranteed!